

# Blackline F15

Wide-bandwidth system

## features

- ▶ Wide-bandwidth system
- ▶ Multi-angle birch ply enclosure
- ▶ User rotatable 80° x 50° horn
- ▶ Top hat fitting for tripod mounting
- ▶ 1.4" (35mm) compression driver
- ▶ Five year limited warranty

## applications

- ▶ Live club performance
- ▶ High powered stage monitoring
- ▶ Club installs



portable club

The high power Blackline F15 is a high performance, wide-bandwidth system in an incredibly compact and efficient package. Extended frequency response is provided by a 15" (380mm) LF driver teamed with a 1.4" (35mm) exit compression driver mounted on a rotatable 80° x 50° constant directivity HF horn. The F15 is perfect for higher power applications where ease of installation or speed of deployment are important factors.

The Blackline F15's multi-angle birch ply cabinet allows it to be used as a high power floor monitor. This ergonomic design and its rotatable HF horn makes near-ceiling mounting and aiming easy in venues with restricted height. Its twelve M8 inserts make a variety of mounting methods possible including horizontal or vertical mounting.

The F15 comes with a top hat fitting for tripod mounting. This fitting can also be used as a pole socket when the F15 is used with, for instance, a Blackline S18 subwoofer.

A Martin Audio M3 Electronic Controller is available to provide F15/subwoofer crossover and limiter facilities. See the M3 Electronic Controller Technical Specifications for suitable M3 Controller Cards.

Century Point, Halifax Road, Cressex Business Park,  
High Wycombe, Buckinghamshire HP12 3SL, England.  
Telephone: +44 (0)1494 535312 Facsimile: +44 (0)1494 438669  
E-mail: [info@martin-audio.com](mailto:info@martin-audio.com)  
All information is Copyright © 2003 Martin Audio Ltd.

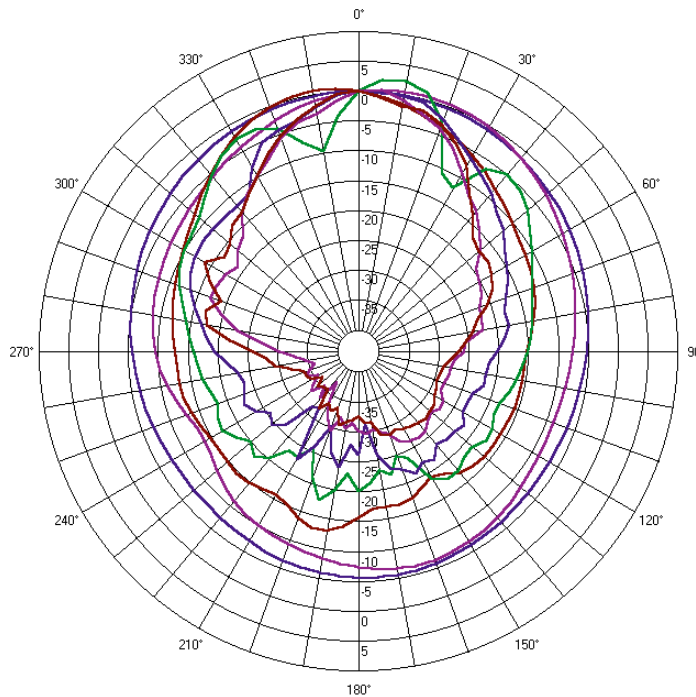


# Blackline F15

Wide-bandwidth system

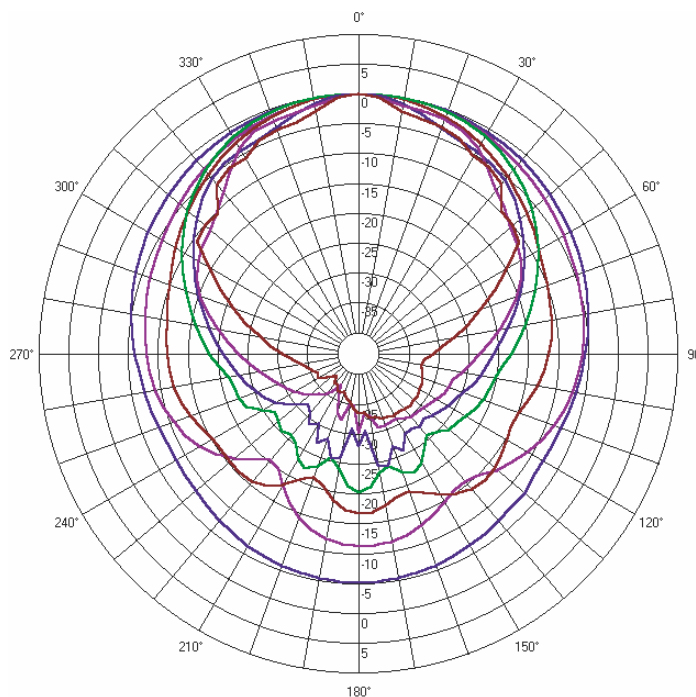
polar plots

portable club



### F15 Vertical

- 200Hz & 1/3 oct. smoothing
- 400Hz & 1/3 oct. smoothing
- 800Hz & 1/3 oct. smoothing
- 1600Hz & 1/3 oct. smoothing
- 3200Hz & 1/3 oct. smoothing
- 6400Hz & 1/3 oct. smoothing
- 12800Hz & 1/3 oct. smoothing



### F15 Horizontal

- 200Hz & 1/3 oct. smoothing
- 400Hz & 1/3 oct. smoothing
- 800Hz & 1/3 oct. smoothing
- 1600Hz & 1/3 oct. smoothing
- 3200Hz & 1/3 oct. smoothing
- 6400Hz & 1/3 oct. smoothing
- 12800Hz & 1/3 oct. smoothing

Century Point, Halifax Road, Cressex Business Park,  
High Wycombe, Buckinghamshire HP12 3SL, England.  
Telephone: +44 (0)1494 535312 Facsimile: +44 (0)1494 438669  
E-mail: [info@martin-audio.com](mailto:info@martin-audio.com)  
All information is Copyright © 2003 Martin Audio Ltd.



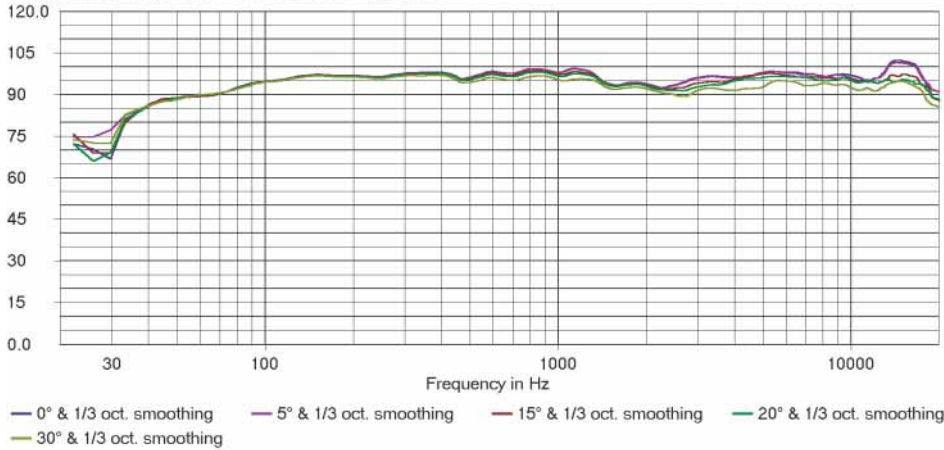
# Blackline F15

Wide-bandwidth system

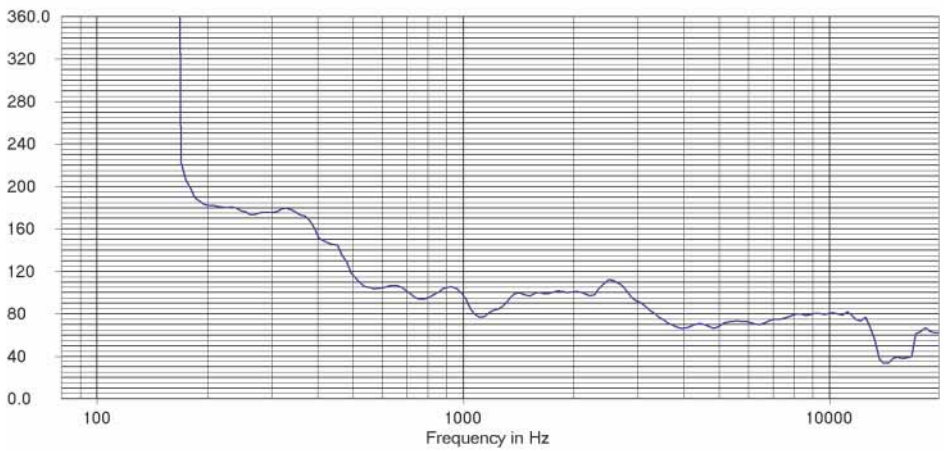
frequency responses

portable club

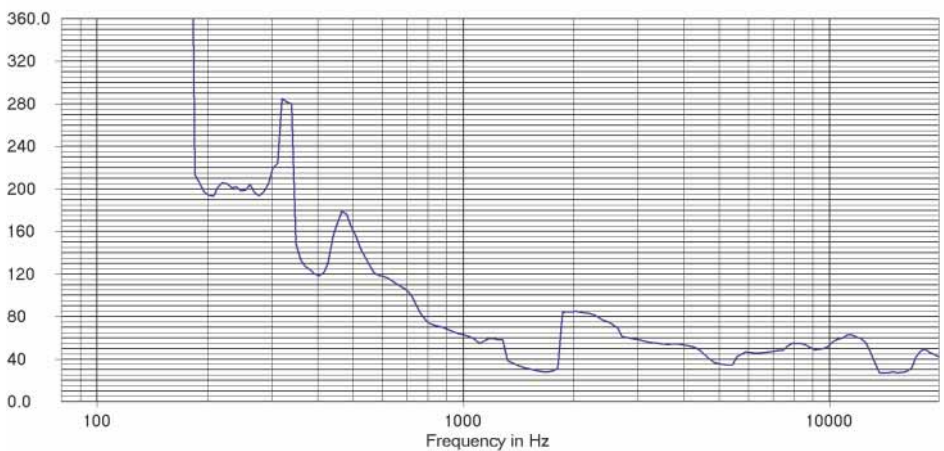
F15 Horizontal Magnitude in dB SPL/2.83V at 1 meter



F15 Horizontal Beamwidth



F15 Vertical Beamwidth



Century Point, Halifax Road, Cressex Business Park,  
High Wycombe, Buckinghamshire HP12 3SL, England.  
Telephone: +44 (0)1494 535312 Facsimile: +44 (0)1494 438669  
E-mail: [info@martin-audio.com](mailto:info@martin-audio.com)  
All information is Copyright © 2003 Martin Audio Ltd.

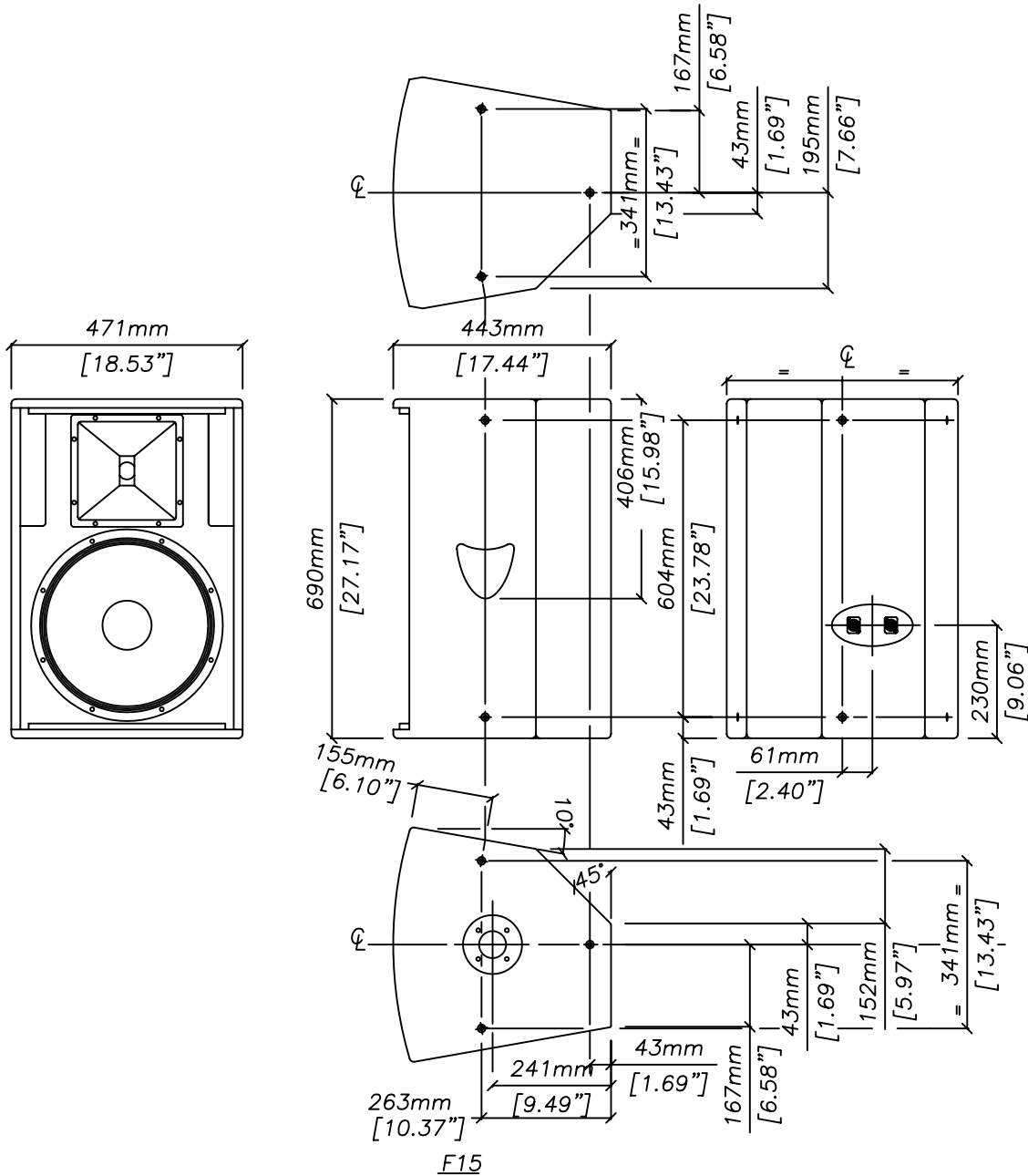


# Blackline F15

Wide-bandwidth system

overall dimensions

portable club



Century Point, Halifax Road, Cressex Business Park,  
High Wycombe, Buckinghamshire HP12 3SL, England.  
Telephone: +44 (0)1494 535312 Facsimile: +44 (0)1494 438669  
E-mail: info@martin-audio.com  
All information is Copyright © 2003 Martin Audio Ltd.



# Blackline F15

Wide-bandwidth system

portable club

## technical specifications

TYPE	Compact, two-way passive, multi-angled, vented
FREQUENCY RESPONSE (1)	55Hz-18kHz $\pm$ 3dB
DRIVERS	15" (380mm) bass driver 1.4" (35mm) exit compression driver
RATED POWER (2)	400W AES, 1600W peak
RECOMMENDED AMPLIFIER	400-800W into 4 ohms
SENSITIVITY (3)	99dB
MAXIMUM SPL (4)	123dB continuous, 129dB peak
IMPEDANCE	8 ohms nominal
DISPERSION (-6dB)	80° horizontal, 50° vertical
CROSSOVER	1.2kHz passive
ENCLOSURE	68 litre, multi-laminate birch ply
FINISH	Textured black paint
PROTECTIVE GRILLE	Black perforated steel
CONNECTORS	2 x Neutrik NL4
FITTINGS	12 x M8 inserts Top hat fitting
DIMENSIONS	(W) 471mm x (H) 690mm x (D) 443mm (W) 18.5ins x (H) 27.2ins x (D) 17.5ins
WEIGHT	32.5kg (71.5lbs)

## accessories

HTKCT04	Pole
HTKCT05	8mm Shouldered Eye Bolt
HTKFI5Y	Flying Yoke
COVF15	Black Padded Cover

### Notes

- (1) Measured on-axis in half space at 2 metres, then referred to 1 metre.
- (2) AES Standard ANSI S4.26-1984.
- (3) Measured in half space conditions at 2 metres with 1 watt input, using band limited pink noise, then referred to 1 metre.
- (4) Measured in half space conditions at 2 metres using band limited pink noise, then referred to 1 metre.

### Trade Descriptions Act

Due to Martin Audio's policy of continuing improvement, we reserve the right to alter these specifications without prior notice. Martin Audio is committed to refining state of the art sound reinforcement, combining in-depth product and field applications research with advanced manufacturing techniques. Every Martin Audio product is built to the highest manufacturing standards and rigorously tested to ensure that it meets the performance criteria specified in the design.

## architectural and engineering specifications

The loudspeaker system shall be of the two-way passive type consisting of one 15" (380mm) direct radiating reflex loaded low frequency transducer and one 1.4" (35mm) exit HF compression driver mounted on a user rotatable constant directivity horn in a multi-angled enclosure. The enclosure shall be of a multi-laminate birch ply construction with integral pole mount and threaded inserts for wall and ceiling mounting. Low and high frequency sections shall be integrated by an internal 1.2kHz passive crossover network.

Performance of the loudspeaker system with its electronic controller shall meet or exceed the following criteria:

Frequency response measured 1 metre on axis shall be 55Hz-18kHz  $\pm$  3dB.

High frequency dispersion at -6dB points shall be 80° H x 50° V.

Power handling shall be 400W AES, 1600W peak.

Rated impedance shall be 8 ohms.

Maximum SPL measured at 1 metre on axis shall be 123dB continuous, 129dB peak.

Dimensions (W) 471mm x (H) 690mm x (D) 443mm (18.5ins x 27.2ins x 17.5ins).

Weight 32.5kg (71.5lbs).

The loudspeaker system shall be the Martin Audio F15.

Century Point, Halifax Road, Cressex Business Park,  
High Wycombe, Buckinghamshire HP12 3SL, England.  
Telephone: +44 (0)1494 535312 Facsimile: +44 (0)1494 438669  
E-mail: [info@martin-audio.com](mailto:info@martin-audio.com)  
All information is Copyright © 2003 Martin Audio Ltd.

