

Blackline F215

Two-way passive, vented trapezoidal enclosure with dual low frequency drivers

features

- ▶ Very high SPL from a full range passive enclosure
- ▶ Extended low frequency performance from dual 15" drivers
- ▶ Dedicated low distortion bass-mid driver
- ▶ User rotatable 80° x 50° horn
- ▶ 1.4" (35mm) exit titanium dome compression driver
- ▶ Multi-laminate birch ply construction
- ▶ Rear mounted castors
- ▶ Five year limited warranty

applications

- ▶ Live sound reinforcement
- ▶ Nightclub installations
- ▶ Sidefill monitor
- ▶ Drum monitor



portable club

The Blackline F215 is a two-way passive, trapezoidal enclosure with dual 15" (380mm) / 3" (75mm) coil low frequency drivers. Whilst both these drivers have the same low frequency characteristics and operate together up to 250Hz, they have been engineered to have different characteristics in the midband. Above 250Hz, only the upper driver - a specially designed, low distortion bass-mid device – is used up to the 1.3kHz crossover point. This technique avoids the uneven response which would occur if both drivers were allowed to operate together over the mid-band and maintains clarity and articulation at extreme output levels.

High frequencies are reproduced by a 1.4" (35mm) exit titanium diaphragm compression driver, loaded by a proprietary rotatable 80° x 50° constant directivity horn.

The trapezoidal enclosure is of multi-laminate birch ply construction incorporating a tough punched steel grille. Two large ports permit uncompressed low frequency output at high input levels. Handles are fitted top and bottom along with four 4" (100mm) rear mounted castors for ease of transportation. Twelve M10 flying inserts are provided for cabinet rigging.

The F215 can be used with or without the M3 controller. Use of the M3 will enhance the low frequency performance of the system and provide high quality limiters to protect the F215 from being overdriven. The M3 can also be used to control the F215 with the Blackline S218 subwoofer for more ambitious nightclub installations and live sound reinforcement requiring extreme low frequency output.

Century Point, Halifax Road, Cressex Business Park,
High Wycombe, Buckinghamshire HP12 3SL, England.
Telephone: +44 (0)1494 535312 Facsimile: +44 (0)1494 438669
E-mail: info@martin-audio.com
All information is Copyright © 2003 Martin Audio Ltd.

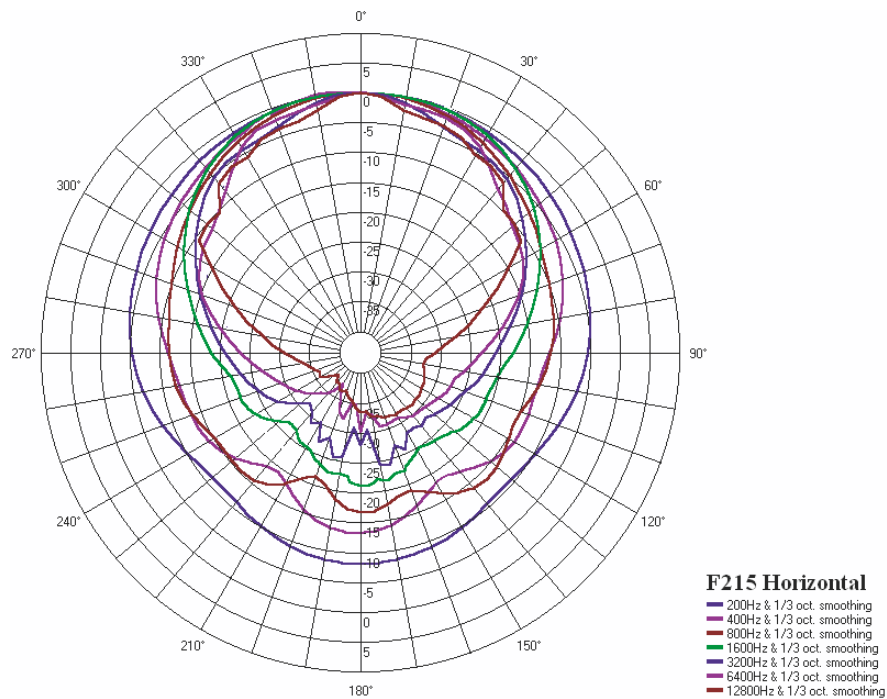
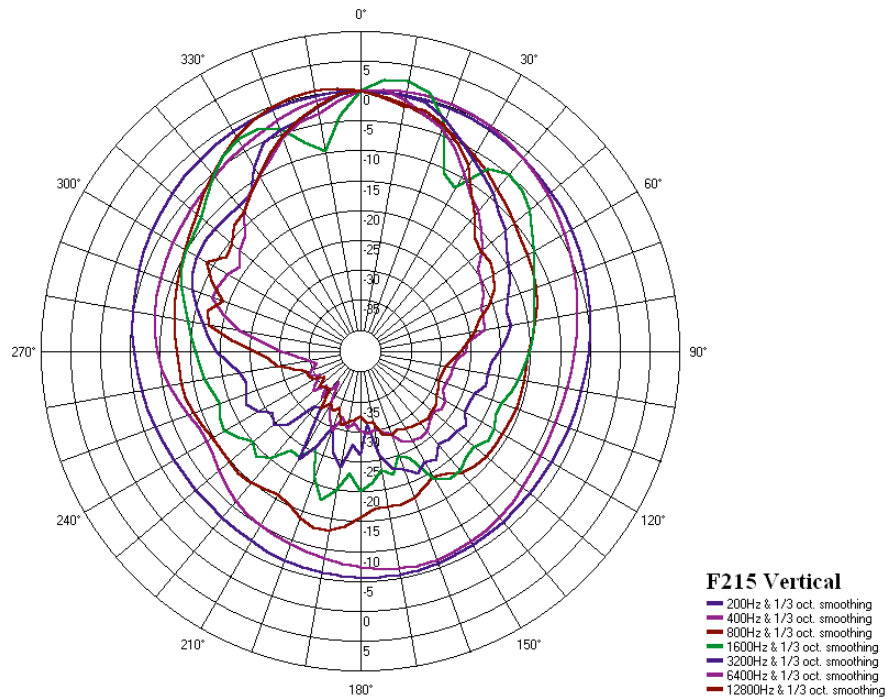


Blackline F215

Two-way passive, vented trapezoidal enclosure with dual low frequency drivers

polar plots

portable club



Century Point, Halifax Road, Cressex Business Park,
High Wycombe, Buckinghamshire HP12 3SL, England.
Telephone: +44 (0)1494 535312 Facsimile: +44 (0)1494 438669
E-mail: info@martin-audio.com
All information is Copyright © 2003 Martin Audio Ltd.



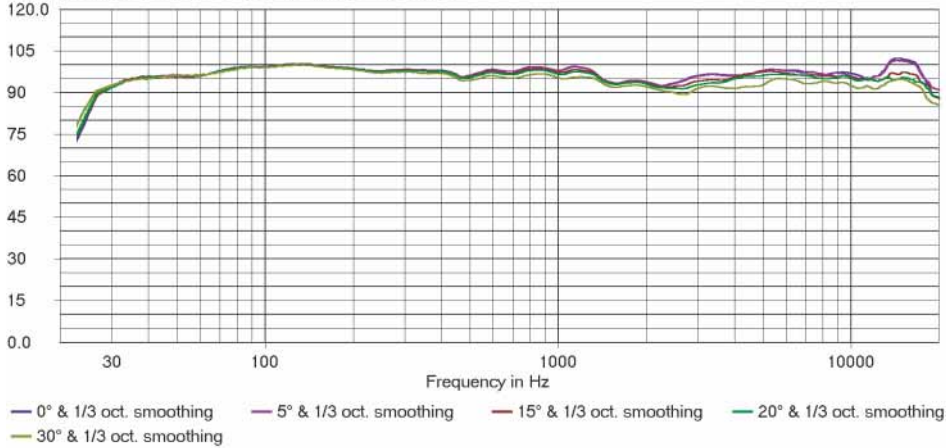
Blackline F215

Two-way passive, vented trapezoidal enclosure with dual low frequency drivers

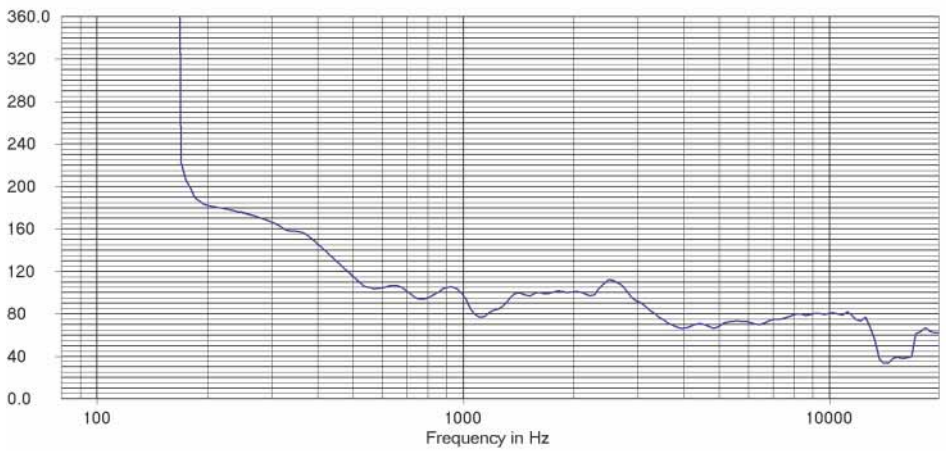
frequency responses

portable club

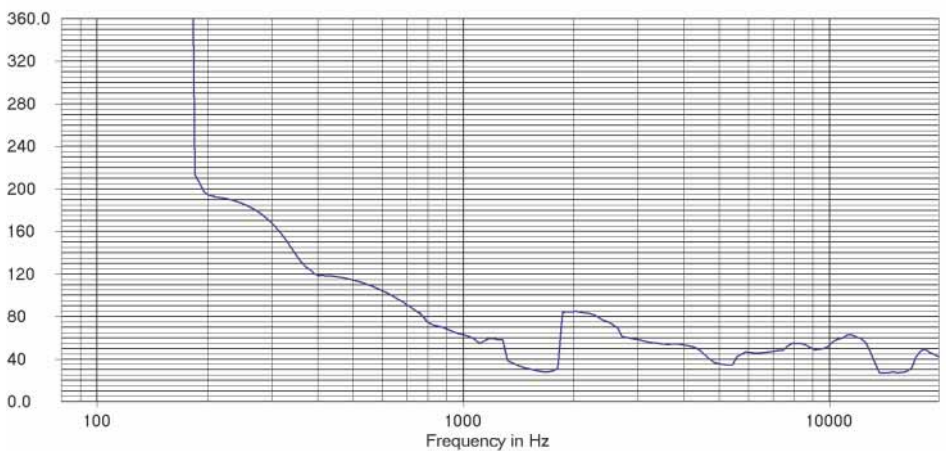
F215 Horizontal Magnitude in dB SPL/2.83V at 1 meter



F215 Horizontal Beamwidth



F215 Vertical Beamwidth



Century Point, Halifax Road, Cressex Business Park,
High Wycombe, Buckinghamshire HP12 3SL, England.
Telephone: +44 (0)1494 535312 Facsimile: +44 (0)1494 438669
E-mail: info@martin-audio.com
All information is Copyright © 2003 Martin Audio Ltd.

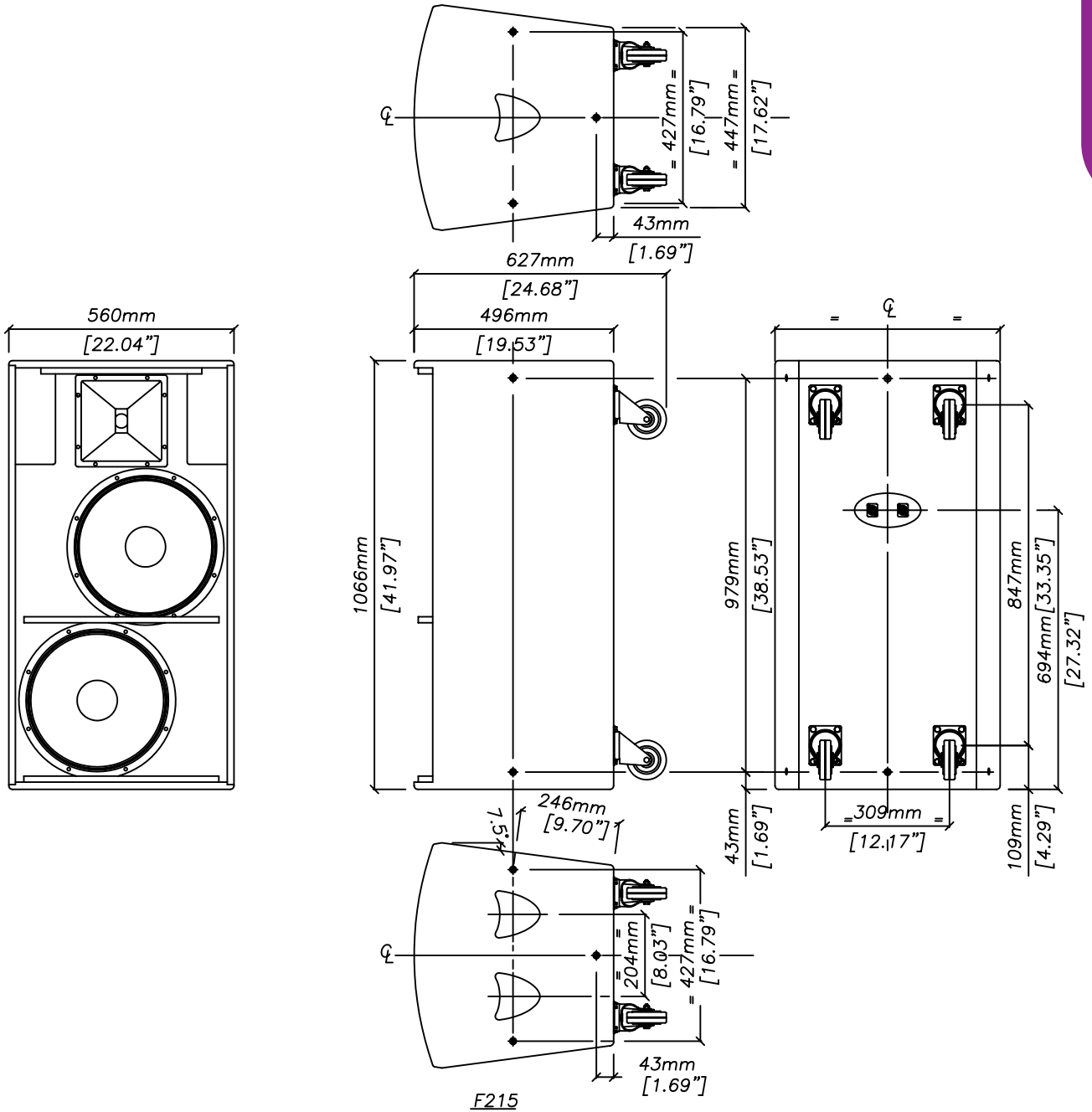


Blackline F215

Two-way passive, vented trapezoidal enclosure with dual low frequency drivers

overall dimensions

portable club



Century Point, Halifax Road, Cressex Business Park,
 High Wycombe, Buckinghamshire HP12 3SL, England.
 Telephone: +44 (0)1494 535312 Facsimile: +44 (0)1494 438669
 E-mail: info@martin-audio.com
 All information is Copyright © 2003 Martin Audio Ltd.



Blackline F215

Two-way passive, vented trapezoidal enclosure with dual low frequency drivers

portable club

technical specifications

TYPE	Two-way passive, reflex enclosure with dual low frequency drivers
FREQUENCY RESPONSE (1)	45Hz-17kHz \pm 3dB
DRIVERS	15" (380mm)/3" (75mm) coil bass driver 15" (380mm)/3" (75mm) coil bass-mid driver 1.4" (35mm) exit HF compression driver
RATED POWER (2)	800W AES, 3200W peak
RECOMMENDED AMPLIFIER	400-1200W into 4 ohms
SENSITIVITY (3)	101dB 1 Watt/1 metre
MAXIMUM SPL (4)	128dB continuous, 134dB peak
IMPEDANCE	4 ohms nominal
DISPERSION (-6dB)	80° horizontal, 50° vertical
CROSSOVER	1.3kHz passive
ENCLOSURE	165 litre (5.8 cu foot) multi-laminate birch ply
FINISH	Textured black paint
PROTECTIVE GRILLE	Black perforated steel
CONNECTORS	2 x Neutrik NL4
FITTINGS	12 x M10 threaded inserts 4 x 4" (100mm) castors
DIMENSIONS	(W) 560mm x (H) 1066mm x (D) 496mm (W) 22ins x (H) 42ins x (D) 19.5ins
WEIGHT	62kg (137lbs)

accessories

HTKCT06	10mm Shouldered Eye Bolt
---------	--------------------------

Notes

- (1) Measured on-axis in half space at 2 metres, then referred to 1 metre.
- (2) AES Standard ANSI S4.26-1984.
- (3) Measured in half space conditions at 2 metres with 1 watt input, using band limited pink noise, then referred to 1 metre.
- (4) Measured in half space conditions at 2 metres using band limited pink noise, then referred to 1 metre.

Trade Descriptions Act

Due to Martin Audio's policy of continuing improvement, we reserve the right to alter these specifications without prior notice. Martin Audio is committed to refining state of the art sound reinforcement, combining in-depth product and field applications research with advanced manufacturing techniques. Every Martin Audio product is built to the highest manufacturing standards and rigorously tested to ensure that it meets the performance criteria specified in the design.

architectural and engineering specifications

The loudspeaker system shall be of the two-way passive type consisting of one 15" (380mm) direct radiating reflex loaded low frequency transducer, one 15" (380mm) direct radiating reflex loaded low – mid frequency transducer and one 1.4" (35mm) exit HF compression driver mounted on a user rotatable constant directivity horn in a trapezoidal enclosure. The enclosure shall be of a multi-laminate birch ply construction with threaded inserts for wall and ceiling mounting and 4" castors for easy deployment. Low and high frequency sections shall be integrated by an internal 1.3kHz passive crossover network.

Performance of the loudspeaker system with its electronic controller shall meet or exceed the following criteria:

Frequency response measured 1 metre on axis shall be 45Hz-17kHz \pm 3dB.

High frequency dispersion at -6dB points shall be 80° H x 50° V.

Power handling shall be 800W AES, 3200W peak.

Rated impedance shall be 4 ohms.

Maximum SPL measured at 1 metre on axis shall be 128dB continuous, 134dB peak.

Dimensions (W) 560mm x (H) 1066mm x (D) 496mm (22ins x 42ins x 19.5ins).

Weight 62kg (137lbs).

The loudspeaker system shall be the Martin Audio F215.

Century Point, Halifax Road, Cressex Business Park,
High Wycombe, Buckinghamshire HP12 3SL, England.
Telephone: +44 (0)1494 535312 Facsimile: +44 (0)1494 438669
E-mail: info@martin-audio.com
All information is Copyright © 2003 Martin Audio Ltd.

