

W8LD

Three-way downfill Line Array Element

features

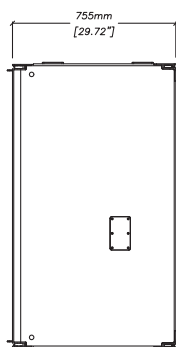
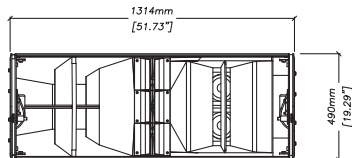
- High performance three-way line array downfill enclosure for use with W8L
- High power – maximum SPL 136dB continuous, 142dB peak (single unit)
- Superior bass impact – all horn design
- Wide bandwidth – 55Hz-18kHz \pm 3dB (single unit)
- True 120° (-6dB) horizontal mid and HF pattern control
- 20° vertical dispersion
- Smooth transition from W8LD to W8L Longbow array
- Fast, integral rigging system, connects directly to W8L Longbow
- Viewpoint™ array optimisation software

applications

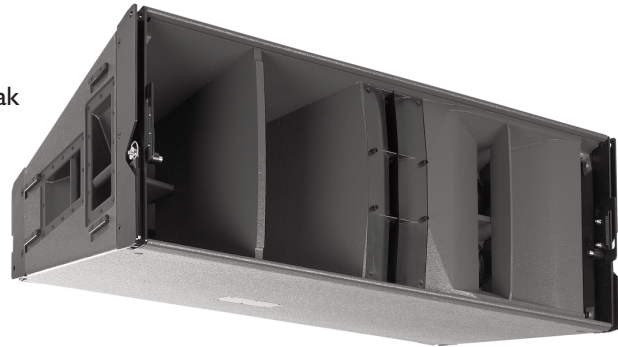
- Used at the bottom of W8L Longbow arrays in 1's or 2's to cover first 20m (two cabinets)
- Low profile sidefill, on top of W8LS
- Premium club installations

The Martin Audio Wavefront W8LD is a line array downfill enclosure which connects directly to the bottom of a W8L Longbow array and covers from the front row out to up to 20m when using two W8LD cabinets. The exceptionally wide 120° horizontal dispersion increases coverage to front row central and off-stage areas, with full pattern control maintained right up to 15kHz. The all-horn design follows the same format as the W8L Longbow and continues the extension of the line array at low, mid and high frequencies.

overall dimensions



W8LD



technical specifications

TYPE	Three-way downfill line array element
FREQUENCY RESPONSE (5)	55Hz-18kHz \pm 3dB
DRIVERS	12" (300mm)/4" (100mm) voice coil, neodymium magnet, Hybrid® bass horn loaded 2 x 6.5" (165mm)/1.5" (37.5mm) coil drivers, horn loaded 3 x 1" (25mm) exit neodymium magnet HF compression drivers, horn loaded
RATED POWER (2)	LF: 1000W AES, 4000W peak MF: 200W AES, 800W peak HF: 200W AES, 800W peak
RECOMMENDED AMPLIFIER	MA12K
SENSITIVITY (6)	LF: 104.5dB MF: 107dB HF: 113dB
MAXIMUM SPL (calculated @ 1m)	LF: 134.5dB continuous, 140.5dB peak MF: 130dB continuous, 136dB peak HF: 136dB continuous, 142dB peak
NOMINAL IMPEDANCE	LF: 8 ohms MF: 8 ohms in UPPER mode, 12 ohms in LOWER mode HF: 6 ohms UPPER mode, 10 ohms in LOWER mode
DISPERSION (-6dB)	120° horizontal, 20° vertical
CROSSOVER	220Hz, 2.5kHz active via DX1.5 or DX2 controller
ENCLOSURE	Vertical trapezoid with 10° wall angle, multi-laminate birch ply construction
FINISH	Textured black or grey paint
PROTECTIVE GRILLE	Black or grey perforated steel
CONNECTORS	2 x Neutrik NL8
FITTINGS	Proprietary rigging system, 4 x bar handles, 8 x interlocking skids
DIMENSIONS (inc. wheelboard)	(W) 1314mm x (H) 490mm x (D) 755mm (911mm) (W) 51.7ins x (H) 19.3ins x (D) 29.7ins (35.9ins)
WEIGHT	95kg (209lbs)

Century Point, Halifax Road, Cressex Business Park,
High Wycombe, Buckinghamshire HP12 3SL, England.
Telephone: +44 (0)1494 535312 Facsimile: +44 (0)1494 438669
E-mail: info@martin-audio.com
All information is Copyright © 2011 Martin Audio Ltd.



www.martin-audio.com

touring and theatre