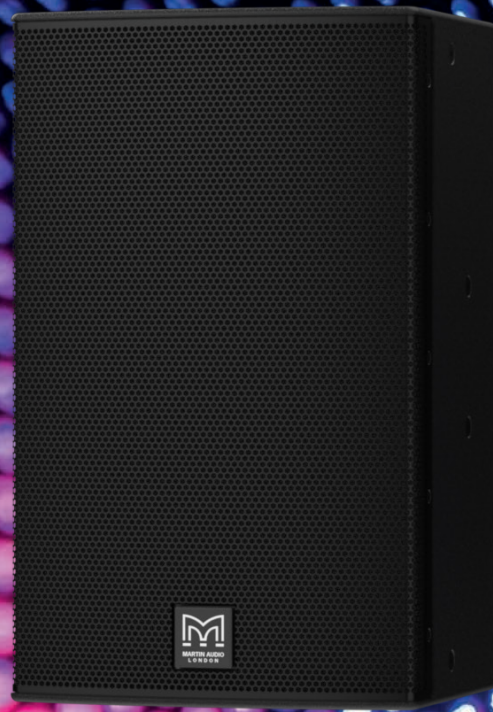


# D.

D•SERIES

PUTTING THE PARTY INTO KTV



**Unite Your Audience**  
The Martin Audio Experience



# D.

D•SERIES

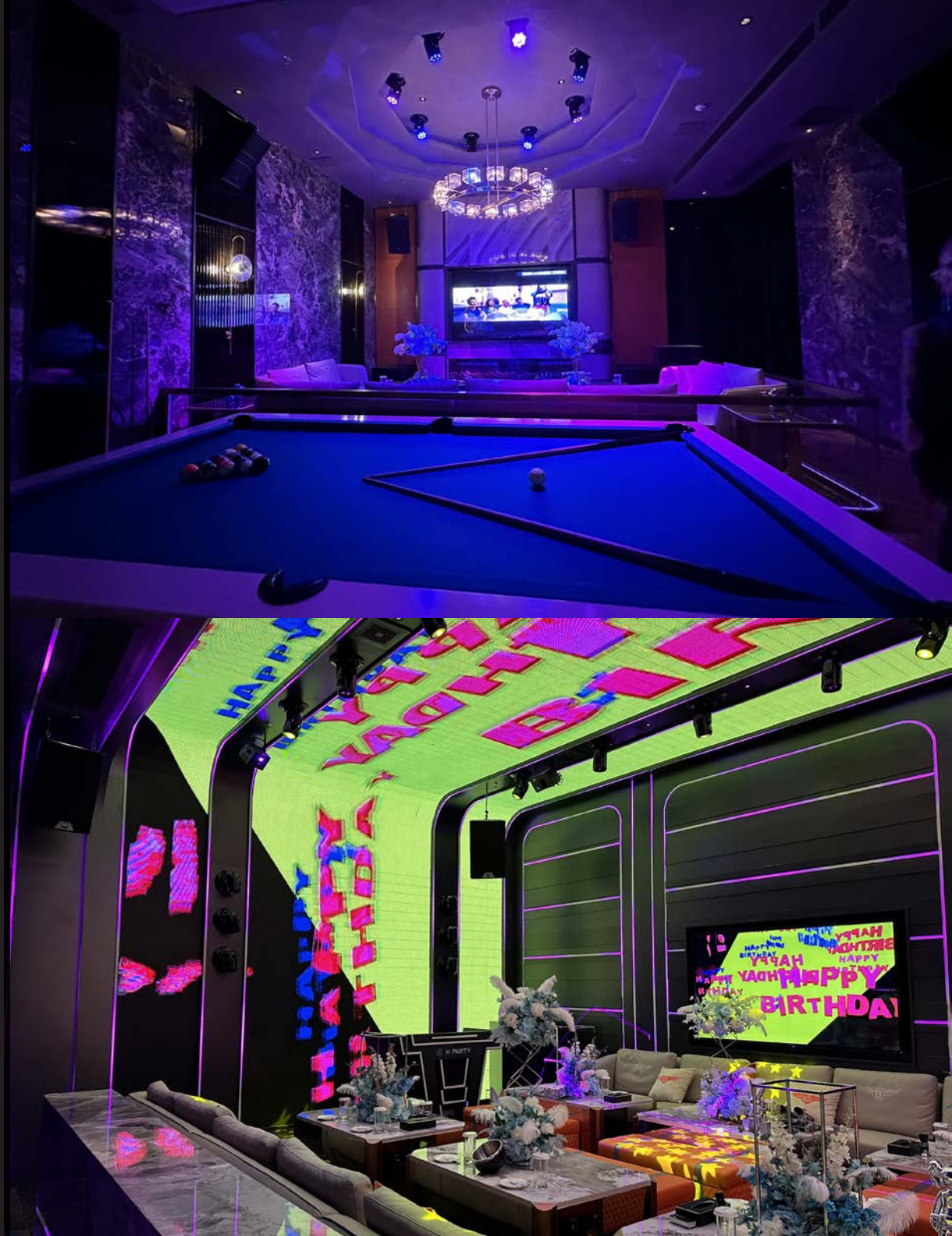
With the D. Series, Martin Audio engineers have designed a range of full-range point source loudspeakers specifically for the on-trend Party KTV rooms that combine traditional KTV for singing with friends as well DJ sets for everyone to party.

*D. Series is exclusively distributed by Sino Huifeng for the China market.*

D.12 and D.15 are passive two-way systems combining the Martin Audio signature sound of power, warmth, clarity, smooth response and vocal presence that can deliver both a quality karaoke experience as well as meeting the demands of a DJ dance set, especially when coupled with the B118X or B218X subwoofer.

D. Series enclosures features a user-rotatable horn for vertical or horizontal orientation and multiple M8 threaded inserts for easy installation. The trapezoid enclosures are braced internally to reduce panel resonances and improve sonic performance and are finished in a textured black paint, with drivers protected by a perforated steel grille.

The LF drivers have demodulating rings providing clear, distortion-free reproduction, even at high SPL and internal crossover networks incorporate technology to protect the low and high frequency drivers to assure reliability without interrupting the performance. The loudspeakers also have front ports specifically designed to marry with the performance of the recommended subwoofers.





## FEATURES

- Full-range, passive two-way system
- KTV specific voicing
- LF driver with demodulating ring for distortion-free vocals
- User-rotatable horn
- Vertical and horizontal mounting option
- Front ported to couple with subwoofer deployment

## APPLICATIONS

- Party KTV club rooms

## D.12



D.12 is a high-performance, two-way system with a maximum SPL of 129dB peak @ 1m.

It features a 12" (300mm)/2.5" (63mm) voice coil LF driver unit and a 1" (25mm) exit compression driver with a 1.4" (35mm) polyimide diaphragm on a rotatable 80° x 50° HF horn.

D.12 loudspeakers are front ported to work in tandem with the B218X or X118 subwoofer.

The trapezoid enclosure is constructed from 15mm engineered wood fibre and finished in a textured black paint. It is fitted with a cloth-backed protective steel grille and M8 inserts are provided for eyebolt suspension and installation.

## D.15



The D.15 is a very high-power, passive two-way system designed for ultimate performance and output from a single enclosure.

Capable of 132dB peak, It features a powerful 15" (380mm)/3" (75mm) voice coil LF drive unit, and a 1" (25mm) exit HF compression driver with a 1.75" (44mm) polyimide diaphragm for extended high frequency response. Its 80° x 50° coverage pattern is ideal for medium-throw applications, and it delivers superior vocal performance at very high sound levels without harshness. D.15 loudspeakers are front ported to work in tandem with B218X or X118 subwoofers.

The enclosure of the D.15 is constructed from 18mm engineered wood fibre and finished in black textured paint. A cloth-backed protective steel grille protects the drivers, and M8 inserts are provided for eyebolt suspension and installation.

## RECOMMENDED SUBWOOFERS

### B118X



The B118X is a single driver, high performance subwoofer for use with the D. Series.

Capable of 135dB peak (half space) and with an operating range of 42Hz-200Hz  $\pm$  3dB, it produces high output levels with low distortion and can be used singly, stacked or flown via integral M10 insets. It features a long-excursion 18" (460mm)/4" (100 mm) voice coil driver in a compact reflex enclosure and its four reflex ports have a large frontal area to reduce turbulent air noise at very high levels.

### B218X



The B218X is a dual driver, high performance subwoofer for use with the D. Series.

Capable of 141dB peak (half space) and with an operating range of 42Hz-200Hz  $\pm$  3dB, it produces high output levels with low distortion and can be used singly or stacked horizontally. It features dual 18" (460mm)/4" (100mm) voice coil, long-excursion drivers in a reflex enclosure with eight large ports that reduce air turbulence at high output levels.

# TECHNICAL SPECIFICATIONS

## D.12

TYPE	Passive 2-way
CROSSOVER	2.5kHz
FREQUENCY RESPONSE - 4PI	- 3dB: 66Hz -20kHz, -10dB: 49Hz with preset
DRIVERS	LF: 12", Voice Coil: 2.5", Type: Ferrite Motor System HF: 1" exit, Voice Coil: 1.4", Type: Polyimide dome compression driver
SENSITIVITY (2.83V 1m free-field)	98dB
NOMINAL IMPEDANCE	8 Ohms
RATED POWER	Program: 600W, Peak: 1200W
MAXIMUM SPL (calculated from sensitivity and power rating)	Continuous: 123 Peak: 129
DISPERSION	H: 80°, V: 50°
PIN CONNECTIONS (INPUT)	1+/-
PIN CONNECTIONS (LINK)	1+/- to 1+/-
DIMENSIONS	(W) 581mm, (H) 360mm, (D) 388mm (W) 22.88ins, (H) 14.7ins, (D) 15.28ins
WEIGHT	19.6kg (43.2lbs)
RECOMMENDED AMPLIFIER	VIA5002 / VIA5004 or iK42 / iK81
RECOMMENDED CONTROLLER	DX0.4 / DX0.6 or DX4.0

## D.15

TYPE	Passive 2-way
CROSSOVER	2.3kHz
FREQUENCY RESPONSE - 4PI	- 3dB: 58Hz - 18kHz, -10dB: 46Hz with preset
DRIVERS	LF: 15", Voice Coil: 3", Type: Ferrite Motor System HF: 1" exit, Voice Coil: 1.7", Type: Polyimide dome compression driver
SENSITIVITY (2.83V 1m free-field)	99dB
NOMINAL IMPEDANCE	8 Ohms
RATED POWER	Program: 1000W, Peak: 2000W
MAXIMUM SPL (calculated from sensitivity and power rating)	Continuous: 126 Peak: 132
DISPERSION	H: 80°, V: 50°
PIN CONNECTIONS (INPUT)	1+/-
PIN CONNECTIONS (LINK)	1+/- to 1+/-
DIMENSIONS	(W) 690mm, (H) 427mm, (D) 424mm (W) 27.17ins, (H) 16.81ins, (D) 16.68ins
WEIGHT	28.2kg (62.2lbs)
RECOMMENDED AMPLIFIER	VIA5002 / VIA5004 or iK42 / iK81
RECOMMENDED CONTROLLER	DX0.4 / DX0.6 or DX4.0

## B118X

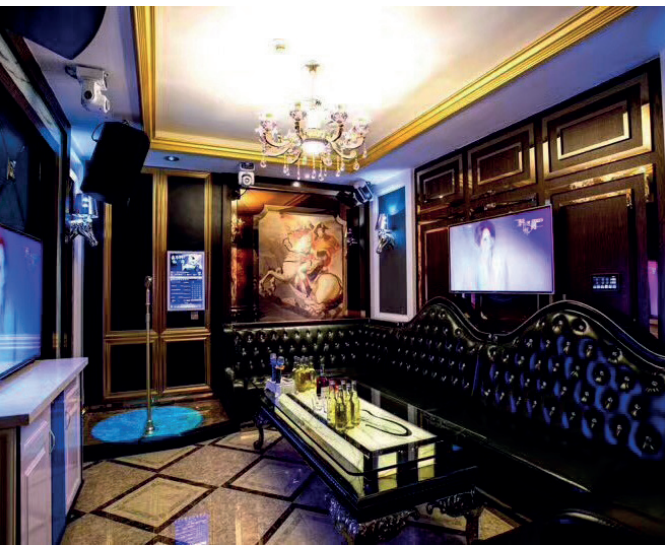
TYPE	Compact, direct radiating subwoofer
DRIVER COMPLIMENT	18" (460mm) /4" (100mm) voice coil, long excursion, ferrite magnet
DISPERSION	Omnidirectional
MAX SPL	135dB
CONT SPL	129dB
FREQUENCY RESPONSE (1)	+/- 3dB, 42Hz-200Hz
FREQUENCY (1)	- 10dB, 33Hz
SENSITIVITY (10)	100dB per. 2.83V
CROSSOVER	80 - 120Hz active
RATED POWER (2) AES	800W
POWER HANDLING (2) PEAK	3200W
NOMINAL IMPEDANCE	8 ohms
CONNECTORS	2 x NL4 type
PIN CONNECTIONS (INPUT)	1+ / 1- INPUT, 2+ /2- N/C
PIN CONNECTIONS (LINK)	1+ / 1- LINK, 2+ /2- N/C
FITTINGS	16x M10, provision for castors, Pole mount socket
HANDLE TYPE	2 x Bar
DIMENSIONS (INCL FEET)	(H) 537mm x (W) 662mm x (D) 640mm
WEIGHT	40.65kg (89.62lbs)
RECOMMENDED AMPLIFIER	VIA5002 / VIA5004 or iK42 / iK81
RECOMMENDED CONTROLLER	DX0.4 / DX0.6 or DX4.0

## B218X

TYPE	Dual-driver, direct radiating subwoofer
FREQUENCY RESPONSE (1)	42Hz-200Hz ± 3dB -10dB @ 33Hz
DRIVER	18" (460mm)/4" (100mm) voice coil, long excursion, ferrite magnet
RATED POWER (2)	1600W AES, 6400W peak
SENSITIVITY (10)	106dB
MAXIMUM SPL (9)	141dB peak (half space)
NOMINAL IMPEDANCE	4 ohms
DISPERSION (-6dB)	Omnidirectional
CROSSOVER	80-120Hz active
ENCLOSURE	Birch/poplar ply
FINISH	Black textured paint
PROTECTIVE GRILLE	Black perforated steel
CONNECTORS	2 x NL4 type
PIN CONNECTIONS (INPUT)	1+ 1- Link Through 2+ 2-
PIN CONNECTIONS (LINK)	1+ 1- Link Through 2+ 2-
FITTINGS	12 x M10 inserts, pole-mount socket 2 x bar handles, 4 x pocket handles, provision for castors
DIMENSIONS (INCL FEET)	(W) 1049mm x (H) 587mm x (D) 727mm (W) 41.3ins x (H) 23.1ins x (D) 28.6ins
WEIGHT	88kg (194lbs)
RECOMMENDED AMPLIFIER	VIA5002 or iK42 / iK81
RECOMMENDED CONTROLLER	DX0.4 / DX0.6 or DX4.0

### Notes

- (1) Measured on-axis in half (2pi) space at 2 metres, then referred to 1 metre.
- (2) AES Standard ANSI S4.26-1984.
- (3) Measured in half (2pi) space at 2 metres with 1 watt input, using band limited pink noise, then referred to 1 metre.
- (4) Measured in half (2pi) space at 2 metres using band limited pink noise, then referred to 1 metre.
- (5) Measured on-axis in open (4pi) space at 2 metres, then referred to 1 metre.
- (6) Measured in open (4pi) space at 2 metres with 1 watt input, using band limited pink noise, then referred to 1 metre.
- (7) Measured in open (4pi) space at 2 metres using band limited pink noise, then referred to 1 metre.
- (8) Measured in open (4pi) space at 2 metres with 2.83v input, using band limited pink noise, then referred to 1 metre.
- (9) Calculated at 1 metre.
- (10) Measured in half (2pi) space at 2 metres with 2.83V input, using band limited pink noise, then referred to 1 metre.



# D

D•SERIES

## Martin Audio Limited

Century Point

Halifax Road

Cressex Business Park

High Wycombe

Buckinghamshire

HP12 3SL

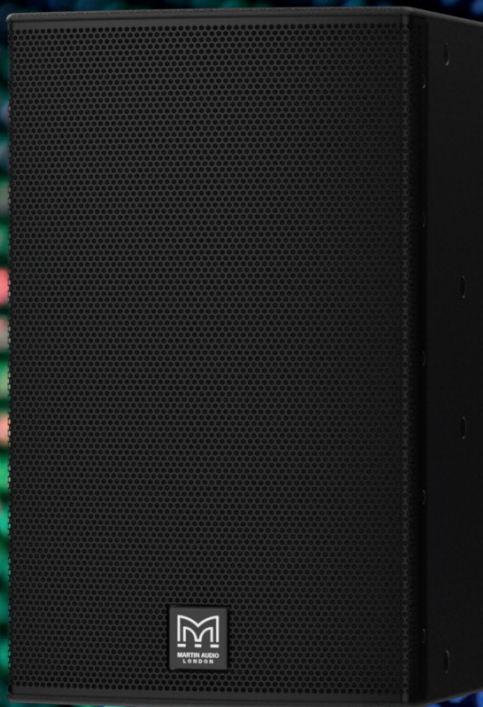
England

### FOR SALES ENQUIRIES:

UK

Telephone: +44 (0)1494 535312

E-mail: [info@martin-audio.com](mailto:info@martin-audio.com)



[www.martin-audio.com](http://www.martin-audio.com)

All information is Copyright © 2023 Martin Audio Ltd.

Martin Audio, the Martin Audio logo and Hybrid are registered trademarks of Martin Audio Ltd. in the United Kingdom, United States and other countries; all other Martin Audio trademarks are the property of Martin Audio Ltd.



**Unite Your Audience**  
The Martin Audio Experience

Version 1.1