

# DANCEFLOOR

## PRODUCT SOLUTIONS

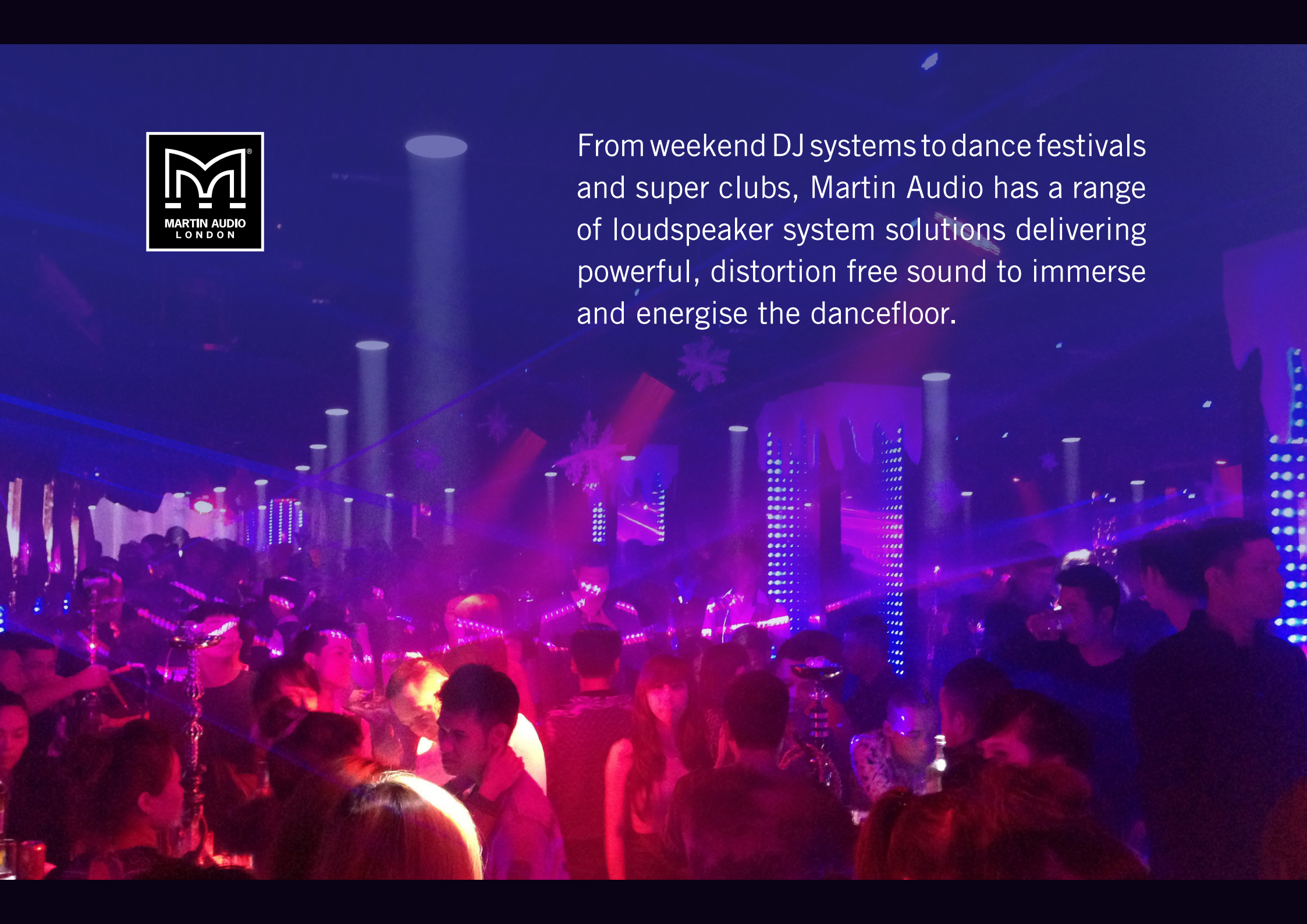
**Unite Your Audience**  
The Martin Audio Experience







From weekend DJ systems to dance festivals and super clubs, Martin Audio has a range of loudspeaker system solutions delivering powerful, distortion free sound to immerse and energise the dancefloor.



# DANCEFLOOR

## PRODUCT SOLUTIONS

### CONTENTS

Portable systems	4-5
Install systems for small to medium clubs	6-8
Install systems for larger clubs	9
Super clubs and dance festivals	10-15







The classic weekend DJ system. Rich sound, thumping base with quick and easy set up. Blackline X Powered can also be used as reinforcement for challenging spaces where maybe the main system isn't sufficiently covering, as well as being perfect for VIP areas.

The portable BlacklineX Powered Series integrates all of our engineering expertise into easy-to-use, quick-to-deploy, high-powered loudspeakers that bring professional quality sound, top-flight performance and road-worthy durability into the hands of hard-working professionals.

With optional Bluetooth control, streaming and a built-in three channel mixer, BlacklineX Powered puts Martin Audio signature sound at your fingertips.







For a more premium set up, CDD-LIVE series takes the performance up a notch and is perfect for standalone DJ system, in-fil as part of a distributed system or for VIP zones.

Combining the 'point-source' benefits of coaxial designs with the consistent coverage of differential dispersion technology, CDD-LIVE full-range systems project sound evenly front-to-back while exhibiting wide horizontal coverage close to the speaker — delivering ultimate fidelity and impact to all corners of the audience.

Onboard Class D amplification, DSP and Dante™ Digital Audio networking assure simplicity of stage set-up and efficient installation, while tour-grade enclosures and comprehensive mounting options — including pole mount, wall brackets, yokes and rigging inserts — provide maximum flexibility in deployment.







Perfect for small club and bar installs, BlacklineX delivers our signature sound of warmth, nuance and clarity at a keen commercial price point.

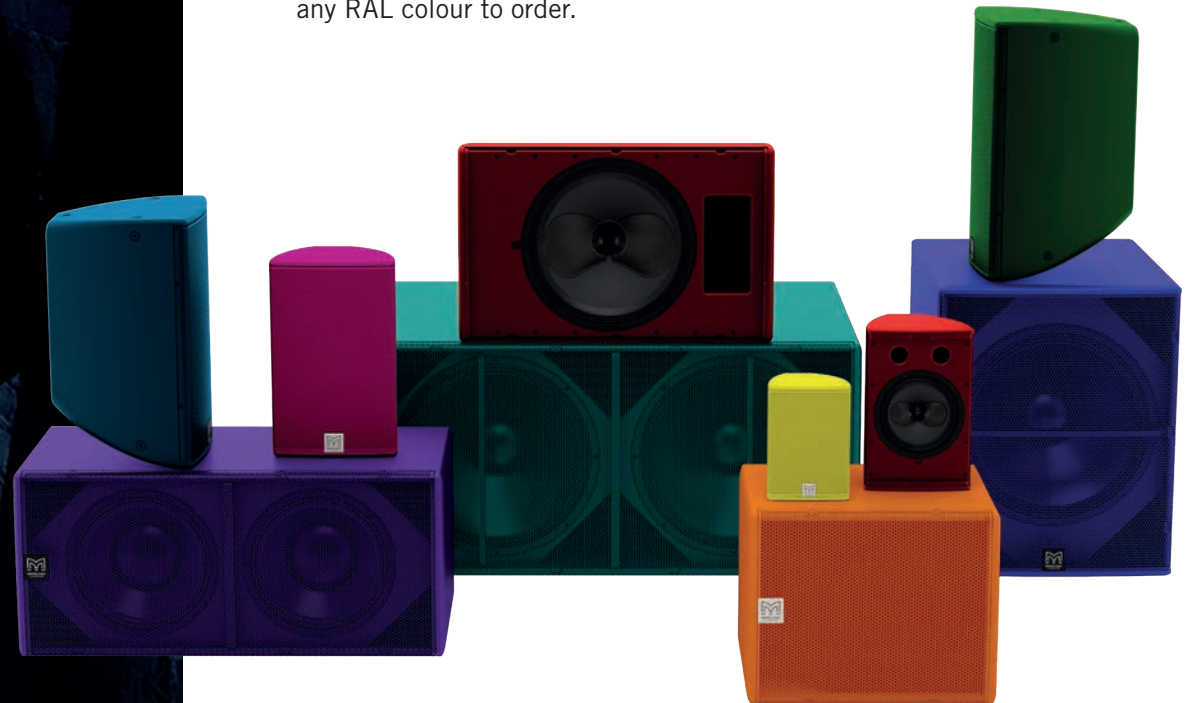






For more premium installs, CDD combines distinctive curved enclosures with patent protected Coaxial Differential Dispersion™ technology to deliver class-leading performance, fidelity and coverage consistency to venues that demand the ultimate in cutting-edge technology and style.

Available in black or white as standard, but for the more adventurous the cabinets and grilles can be finished in any RAL colour to order.



## TORUS

For clubs that typically require a throw between 15-30m, a full-blown line array is not always practical, optimal or affordable. Conversely, a point source solution may not be sufficient in coverage and SPL.

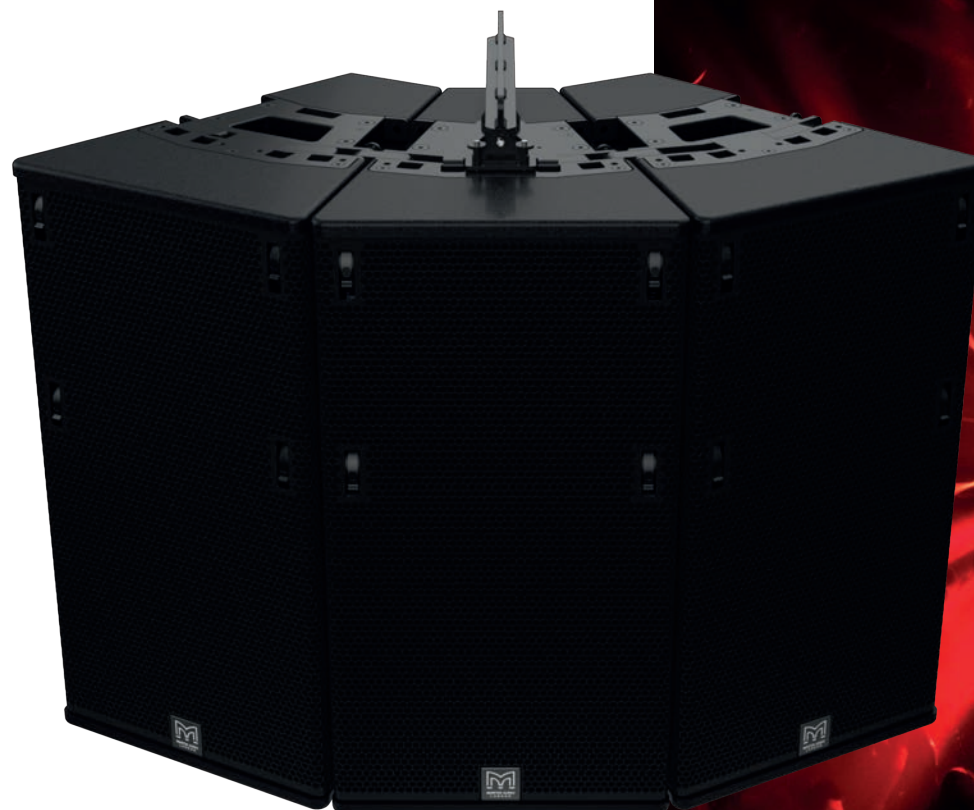
TORUS is a constant curvature array, designed to fill that gap perfectly, combining optimised coverage, SPL profile and cost efficiency. For small to medium clubs, TORUS will deliver superior coverage and higher SPL and its footprint lends itself to deploying medium to wide coverage left/right or quad systems in venues with low ceilings.

Each TORUS cabinet is designed for a flexible dispersion pattern and this can be manually adjusted between 90°, 60° or 75° (Asymmetrical) via the unique Dynamic Horn Flare™. This not only moves and locks the waveguide but also adjusts the horn mouth, including the low diffraction termination into the baffle, to ensure correct geometry and optimal performance in each of those settings. When flown in horizontal format, this becomes a flexible vertical dispersion and an asymmetrical 75° works well in this deployment.

The Dynamic Horn Flare™ is moved by a rotating mechanism accessible from the front grille so is easy and intuitive, while leaving the grille design to be both smart and fully protective of the drivers within.

In the other plane, 15° or 30° is achieved via two separate cabinet types: T1215 and T1230, respectively. These cabinets can also be combined to fit venue and coverage requirements.

TORUS also features a phase plug mounted in front of the 12" neodymium driver to increase mid-band sensitivity. Along with three 1.4" HF Polymer dome neodymium compression drivers, the sonic performance is not compromised even when driven at higher SPL.





## TH SERIES

Ideally suited to larger club applications TH Series also aesthetically complements CDD and BlacklineX ranges.

Horn-loading the bass and midrange sections as well as the high-frequency section maximises the efficiency of all bands, resulting in exceptional impact and output from a single enclosure. Bi-amp operation, with an internal passive network for the mid/high crossover, ensures the most effective use of available amplifier power.

Sonically, TH Series systems deliver clarity and smooth response at high levels with ease.

THV is a vertically formatted system while THH is a horizontally formatted system. THH is adept for low ceiling, high impact/SPL distributed deployment as well as for ground-stack arrays that give a visual impact and high SPL.







WAVEFRONT  
PRECISION

Martin Audio is the global leader in optimised line array technology, and Wavefront Precision line arrays offer a scalable approach to the level of control, consistency and coverage required for any club installation. Comprising WPM, WPS, WPC and WPL, Wavefront Precision is Martin Audio's fastest ever selling line array format series.

The series was also honoured with a Queen's Award for Enterprise in Innovation.

The Wavefront Precision family of optimised line arrays was the first passive systems to be able to set the independent coverage goals for three key parameters: Audience Area - where sound distribution should be even with respect to volume and frequency response; Non-Audience Areas - where sound should not leak in to; and Hard Avoid Areas - where sound must not leak at all. The technology within these systems is protected by granted patent.



THE QUEEN'S AWARDS  
FOR ENTERPRISE:  
INNOVATION  
2021

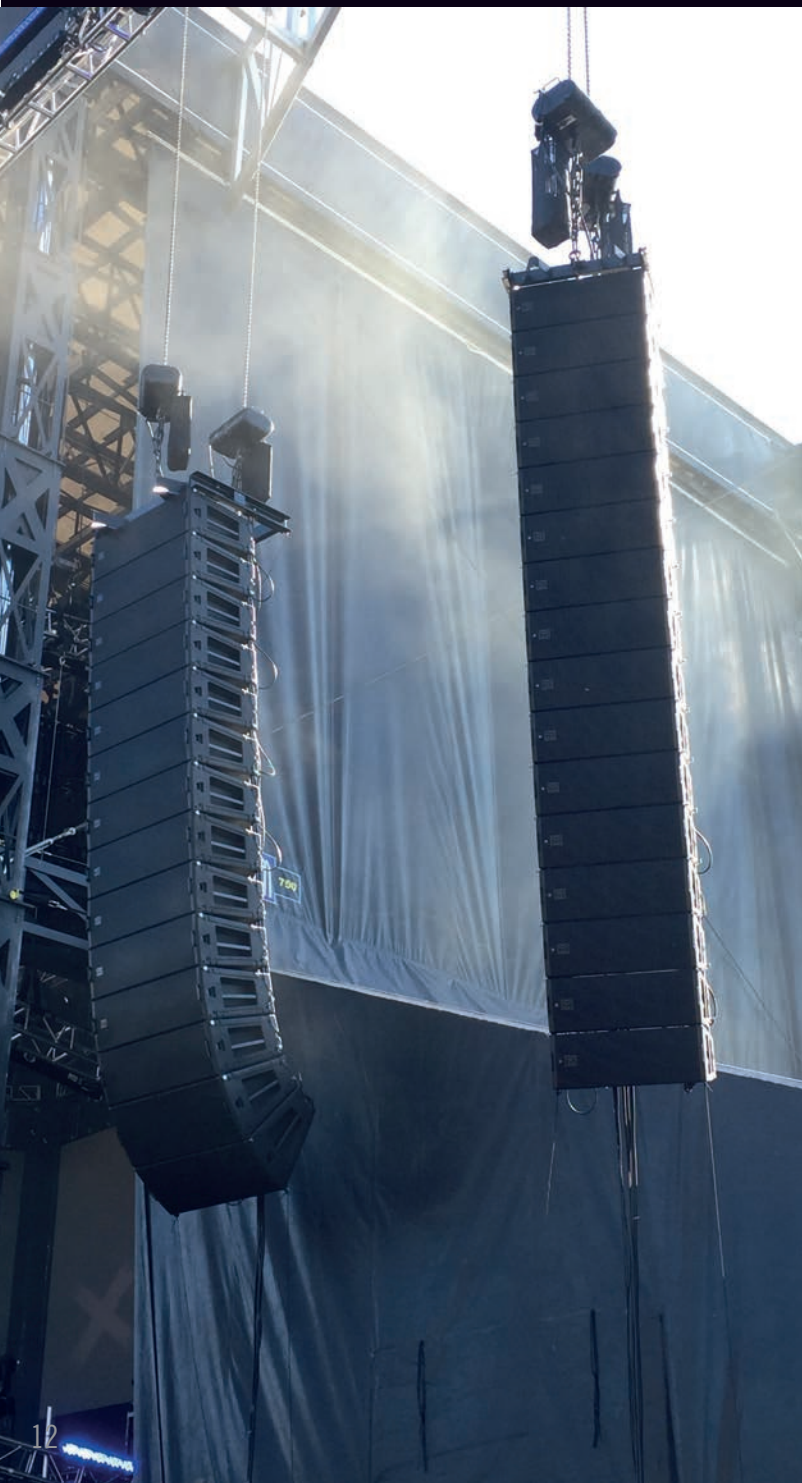








## SUPER CLUBS AND DANCE FESTIVALS



MLA delivers maximum power, high end extension and low-end impact combined with the ultimate in sound control. Perfect for major EDM festivals and super clubs.

For dance festivals in particular, MLA not only delivers the quality of sound but also importantly control. With MLA, festival organisers are able to minimise sound spill between stages and ensure even coverage to every member of the audience which means the audience get the experience they deserve. Equally MLA can also provide exceptional control for sound beyond the audience perimeter and given the frequent proximity of neighbourhoods to festival activity, this can provide an essential ingredient.

So, for the best of both worlds, MLA can provide the best audio for the audience with minimal impact to surrounding areas.









## SX SERIES



Yes, its all about the bass...

Martin Audio's SX Series of subwoofers are designed to meet a multitude of portable club, or festival sound application needs that call for increased impact and low frequency performance, partnering with our loudspeakers across the portfolio.

SX Subwoofers offer a full complement passive and select self-powered options including everything from a slim line single 10" (SX110) for discreet install purposes through to the all-powerful chest thumping efficiency of the double-eighteen Hybrid® Horn/Reflex SXH218 suitable for super clubs and festivals.







# DANCEFLOOR

## PRODUCT SOLUTIONS

### Martin Audio Limited

Century Point  
Halifax Road

Cressex Business Park

High Wycombe

Buckinghamshire

HP12 3SL

England

### FOR SALES ENQUIRIES:

#### UK

Telephone: +44 (0)1494 535312

E-mail: [info@martin-audio.com](mailto:info@martin-audio.com)

#### NORTH AMERICA

Telephone: 323 381 5310

[www.martin-audio.com](http://www.martin-audio.com)

All information is Copyright © 2021 Martin Audio Ltd.

Martin Audio, the Martin Audio logo and Hybrid are registered trademarks of Martin Audio Ltd. in the United Kingdom, United States and other countries; all other Martin Audio trademarks are the property of Martin Audio Ltd.



**Unite Your Audience**  
The Martin Audio Experience

Version 1.0