

Blackline H3

All-horn three-way system

features

- ▶ All-horn three-way system
- ▶ 'Phase-ball' loaded mid-driver
- ▶ Hybrid™ LF section
- ▶ Fitted with handles and castors
- ▶ Five year limited warranty

applications

- ▶ Larger club performance
- ▶ Large scale installs



professional

The Blackline H3 is a very high performance, all-horn, three-way system in a single, wide-bandwidth package. The Hybrid™ low frequency section comprises a horn-loaded 15" (380mm) / 4" (100mm) voice coil driver that is reflex loaded to extend the LF output to below the natural horn cut-off point. The 10" (250mm) mid-horn features a unique 'phase-ball' loading device and is teamed with a 70° x 40° horn-loaded 1" (25mm) exit compression driver for efficient mid-HF performance. The system has a passive 2kHz mid-HF crossover network to permit bi-amp operation using the M3 Electronic Controller.

The H3 is housed in a trapezoidal birch ply cabinet and may be horizontally arrayed for wide coverage applications. Its twelve M10 inserts make a variety of mounting methods possible including horizontal or vertical mounting. Generous handles and rear castors are fitted for easy cabinet deployment.

A Martin Audio M3 Electronic Controller is available to provide H3 crossover and limiter facilities. See the M3 Electronic Controller Technical Specifications for suitable M3 Controller Cards.

Century Point, Halifax Road, Cressex Business Park,
High Wycombe, Buckinghamshire HP12 3SL, England.
Telephone: +44 (0)1494 535312 Facsimile: +44 (0)1494 438669
E-mail: info@martin-audio.com
All information is Copyright © 2003 Martin Audio Ltd.

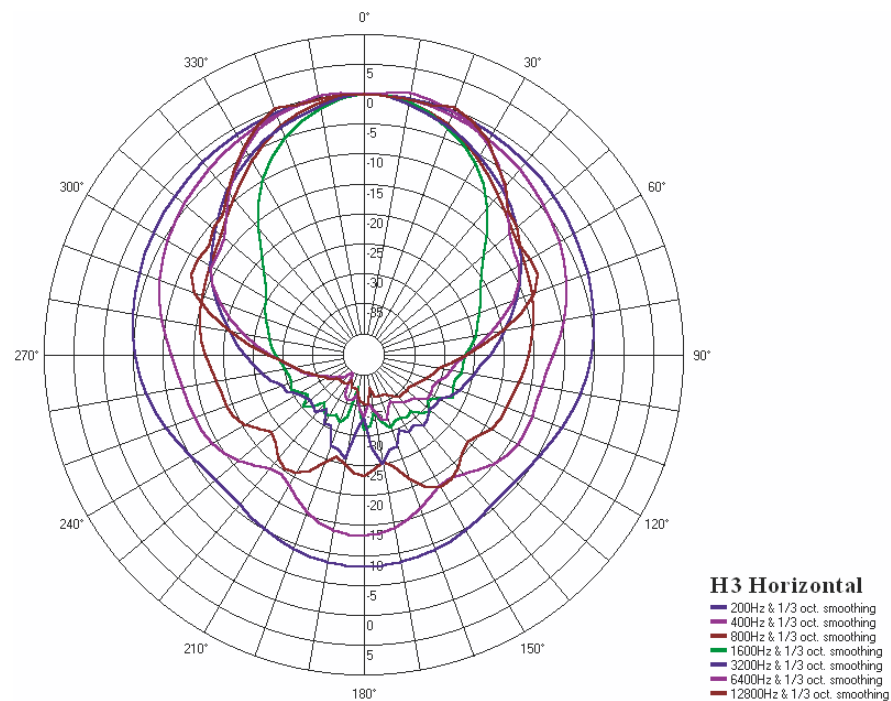
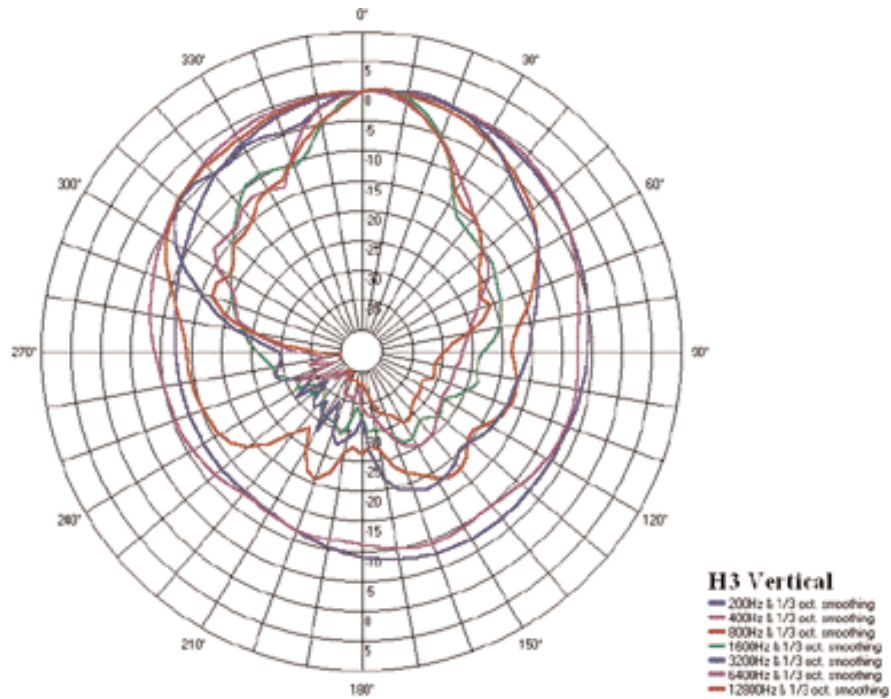


Blackline H3

All-horn three-way system

polar plots

professional



Century Point, Halifax Road, Cressex Business Park,
High Wycombe, Buckinghamshire HP12 3SL, England.
Telephone: +44 (0)1494 535312 Facsimile: +44 (0)1494 438669
E-mail: info@martin-audio.com
All information is Copyright © 2003 Martin Audio Ltd.

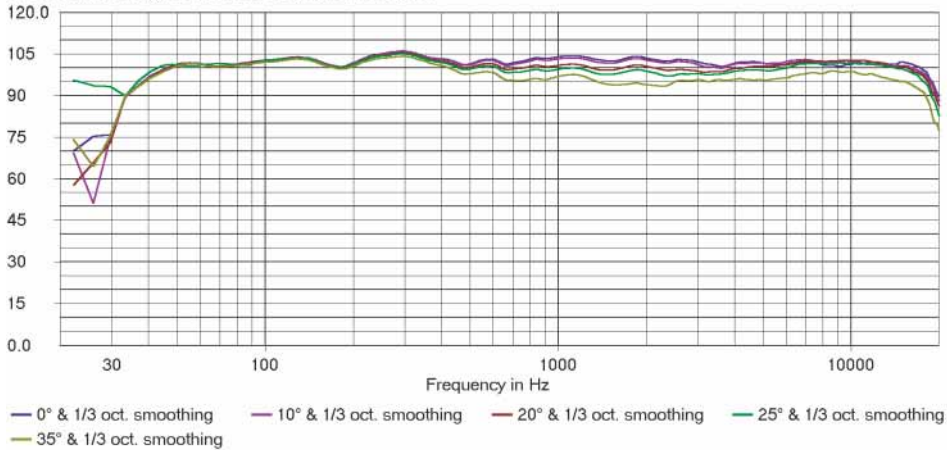


Blackline H3

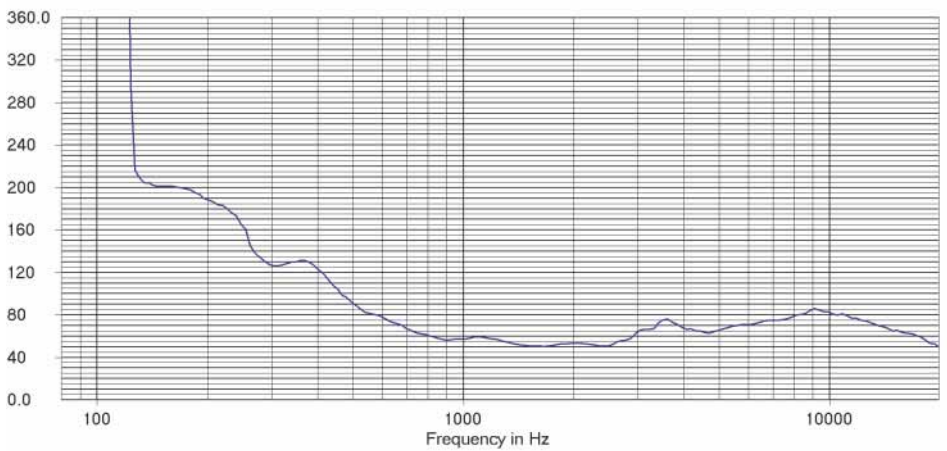
All-horn three-way system

frequency responses

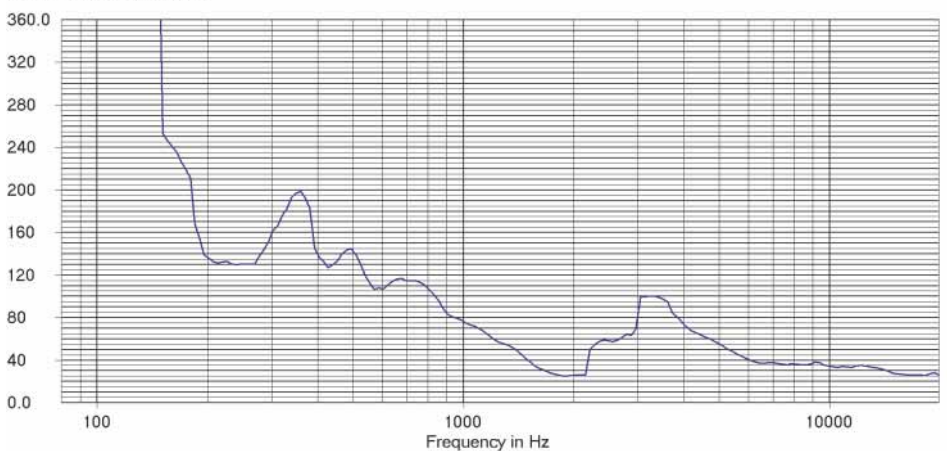
H3 Horizontal Magnitude in dB SPL/2.83V at 1 meter



H3 Horizontal Beamwidth



H3 Vertical Beamwidth



Century Point, Halifax Road, Cressex Business Park,
High Wycombe, Buckinghamshire HP12 3SL, England.
Telephone: +44 (0)1494 535312 Facsimile: +44 (0)1494 438669
E-mail: info@martin-audio.com
All information is Copyright © 2003 Martin Audio Ltd.



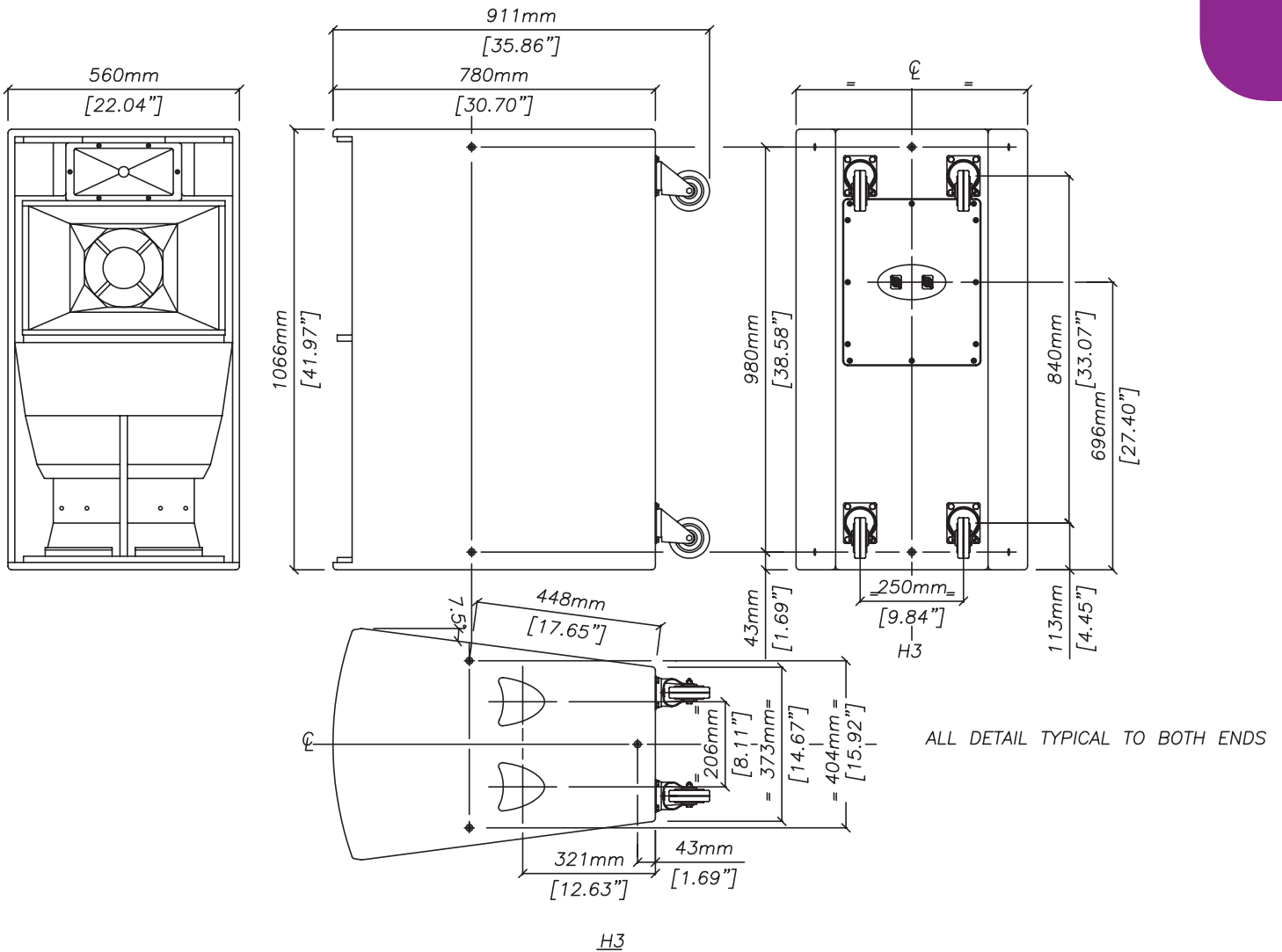
professional

Blackline H3

All-horn three-way system

overall dimensions

professional



Blackline H3

All-horn three-way system

professional

technical specifications

TYPE	Three-way bi-amp trapezoid Hybrid™ fully horn-loaded
FREQUENCY RESPONSE (1)	50Hz-18kHz ± 3dB
DRIVERS	15" (380mm) bass driver 10" (250mm) mid driver 1" (25mm) exit compression driver
RATED POWER (2)	LF: 500W AES, 2000W peak MF + HF: 300W AES, 1200W peak
RECOMMENDED AMPLIFIER	LF: 400-1000W into 4 ohms MF + HF: 400-650W into 4 ohms
SENSITIVITY (6)	LF: 104dB, MF + HF: 104dB
MAXIMUM SPL (7)	130dB continuous, 136dB peak
NOMINAL IMPEDANCE	LF: 8 ohms, MF + HF: 8 ohms
DISPERSION (-6dB)	70° horizontal, 40° vertical
CROSSOVER	200Hz active, 2kHz passive
ENCLOSURE	250 litre, multi-laminate birch ply
FINISH	Textured black paint
PROTECTIVE GRILLE	Black perforated steel
CONNECTORS	2 x Neutrik NL4
FITTINGS	12 x M10 inserts 4 x 4" (100mm) castors
OPTIONS	150W 100/70V line transformer
DIMENSIONS	(W) 560mm x (H) 1066mm x (D) 780mm (911mm) (W) 22ins x (H) 42ins x (D) 30.7ins (35.9ins)
WEIGHT	77.5kg (170.5lbs)

accessories

HTKCT06	10mm Shouldered Eye Bolt
COVH3	Black Padded Cover

Notes

- (1) Measured on-axis in half space at 2 metres, then referred to 1 metre.
- (2) AES Standard ANSI S4.26-1984.
- (3) Measured in half space conditions at 2 metres with 1 watt input, using band limited pink noise, then referred to 1 metre.
- (4) Measured in half space conditions at 2 metres using band limited pink noise, then referred to 1 metre.

Trade Descriptions Act

Due to Martin Audio's policy of continuing improvement, we reserve the right to alter these specifications without prior notice. Martin Audio is committed to refining state of the art sound reinforcement, combining in-depth product and field applications research with advanced manufacturing techniques. Every Martin Audio product is built to the highest manufacturing standards and rigorously tested to ensure that it meets the performance criteria specified in the design.

architectural and engineering specifications

The loudspeaker system shall be of the trapezoidal three-way bi-amp Hybrid™ fully horn loaded type, consisting of one 15" (380mm) horn and reflex loaded low frequency transducer, one 10" (250mm) horn loaded mid frequency transducer with a 'phase-ball' loading device and one 1" (25mm) exit HF compression driver mounted on a constant directivity horn. The enclosure shall be of a multi-laminate birch ply construction with threaded inserts for wall and ceiling mounting and fitted with 4" castors for easy deployment. The mid and high frequency sections shall be integrated by an internal 2kHz passive crossover network.

Performance of the loudspeaker system with its electronic controller shall meet or exceed the following criteria:

Frequency response measured 1 metre on axis shall be 50Hz-18kHz ± 3dB.

High frequency dispersion at -6dB points shall be 70°H x 40°V.

Power handling shall be 500W AES, 2000W peak LF, 300W AES, 1200W peak MF + HF.

Rated impedance shall be 8 ohms LF, 8 ohms MF + HF. Maximum SPL measured at 1 metre on axis shall be 130dB continuous, 136dB peak.

Dimensions (W) 560mm x (H) 1066mm x (D) 780mm (22ins x 42ins x 30.7ins).

Weight 77.5kg (170.5lbs).

The loudspeaker system shall be the Martin Audio H3.

Century Point, Halifax Road, Cressex Business Park,
High Wycombe, Buckinghamshire HP12 3SL, England.
Telephone: +44 (0)1494 535312 Facsimile: +44 (0)1494 438669
E-mail: info@martin-audio.com
All information is Copyright © 2003 Martin Audio Ltd.

