

# WT3

Arrayable three-way compact theatre enclosure

## features

- ▶ Arrayable compact trapezoid enclosure
- ▶ Switchable bi-amp/tri-amp operation
- ▶ Very high SPL output capability
- ▶ 65° coverage angle from compound mid/high horn
- ▶ Multi-laminate birch plywood construction
- ▶ Certified MAN quick-connect flying option

## applications

- ▶ Theatre sound systems
- ▶ Club sound reinforcement
- ▶ Music playback in nightclubs



touring and theatre

An exceptionally efficient, high power full-range system achieving true three-way full frequency performance from an enclosure just 28" in height. This innovative system brings superb sound reproduction to the largest auditoria.

The powerful 15" (380mm) low frequency driver with innovative heat exchange system is complemented by mid-range and high frequencies generated by sophisticated compound mid-high horn configuration, designed to have matched constant Q, 65° horizontal dispersion patterns. The WT3 can be used as a stand-alone system or arrayed in multiples.

Where ultra-low frequency enhancement is required, a Wavefront Series sub-bass system can be used in conjunction with the WT3 and a DX1.5 or DX2 controller to extend the power bandwidth to below 35Hz.

Century Point, Halifax Road, Cressex Business Park,  
High Wycombe, Buckinghamshire HP12 3SL, England.  
Telephone: +44 (0)1494 535312 Facsimile: +44 (0)1494 438669  
E-mail: [info@martin-audio.com](mailto:info@martin-audio.com)  
All information is Copyright © 2011 Martin Audio Ltd.

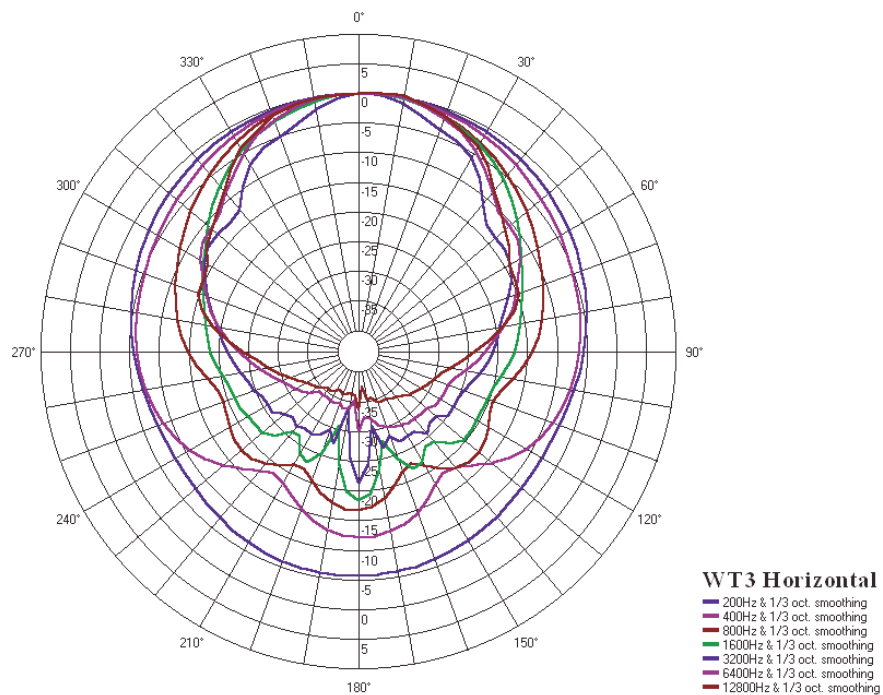
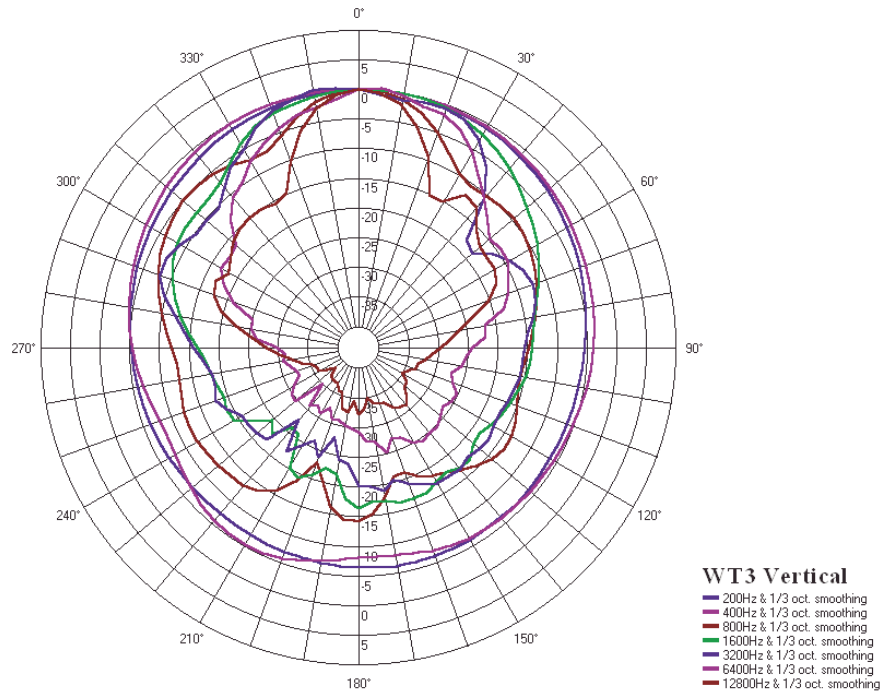


# WT3

Arrayable three-way compact theatre enclosure

polar plots

touring and theatre



Century Point, Halifax Road, Cressex Business Park,  
High Wycombe, Buckinghamshire HP12 3SL, England.  
Telephone: +44 (0)1494 535312 Facsimile: +44 (0)1494 438669  
E-mail: [info@martin-audio.com](mailto:info@martin-audio.com)  
All information is Copyright © 2011 Martin Audio Ltd.



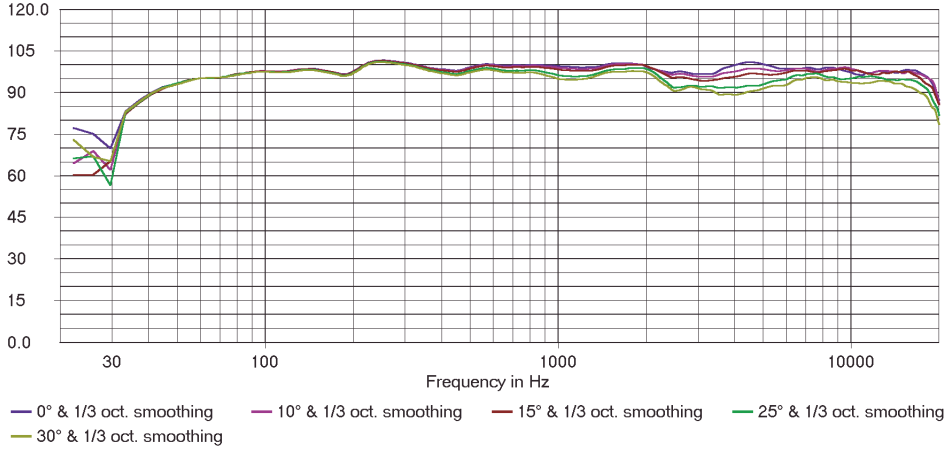
# WT3

Arrayable three-way compact theatre enclosure

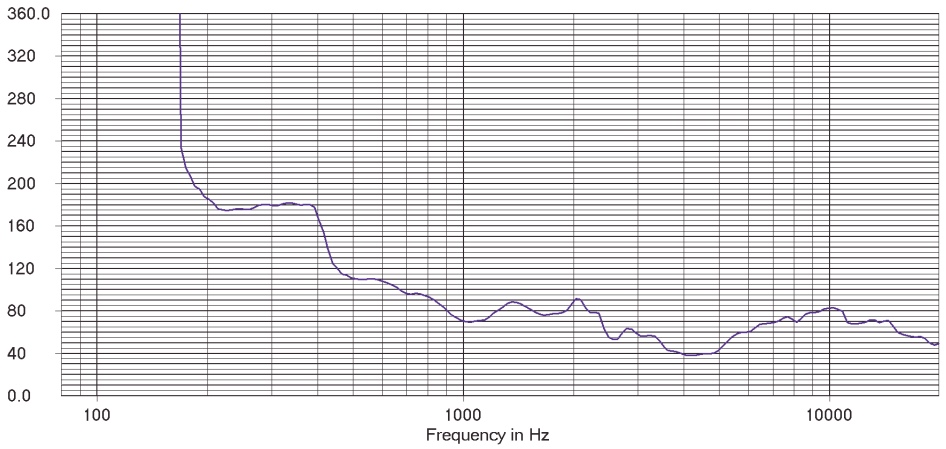
frequency responses

touring and theatre

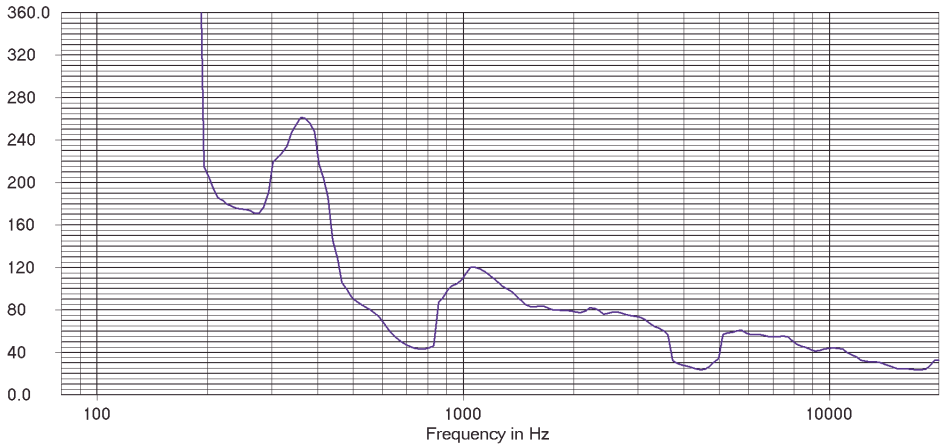
WT3 Horizontal Magnitude in dB SPL/2.83V at 1 meter



WT3 Horizontal Beamwidth



WT3 Vertical Beamwidth



Century Point, Halifax Road, Cressex Business Park,  
High Wycombe, Buckinghamshire HP12 3SL, England.  
Telephone: +44 (0)1494 535312 Facsimile: +44 (0)1494 438669  
E-mail: [info@martin-audio.com](mailto:info@martin-audio.com)  
All information is Copyright © 2011 Martin Audio Ltd.

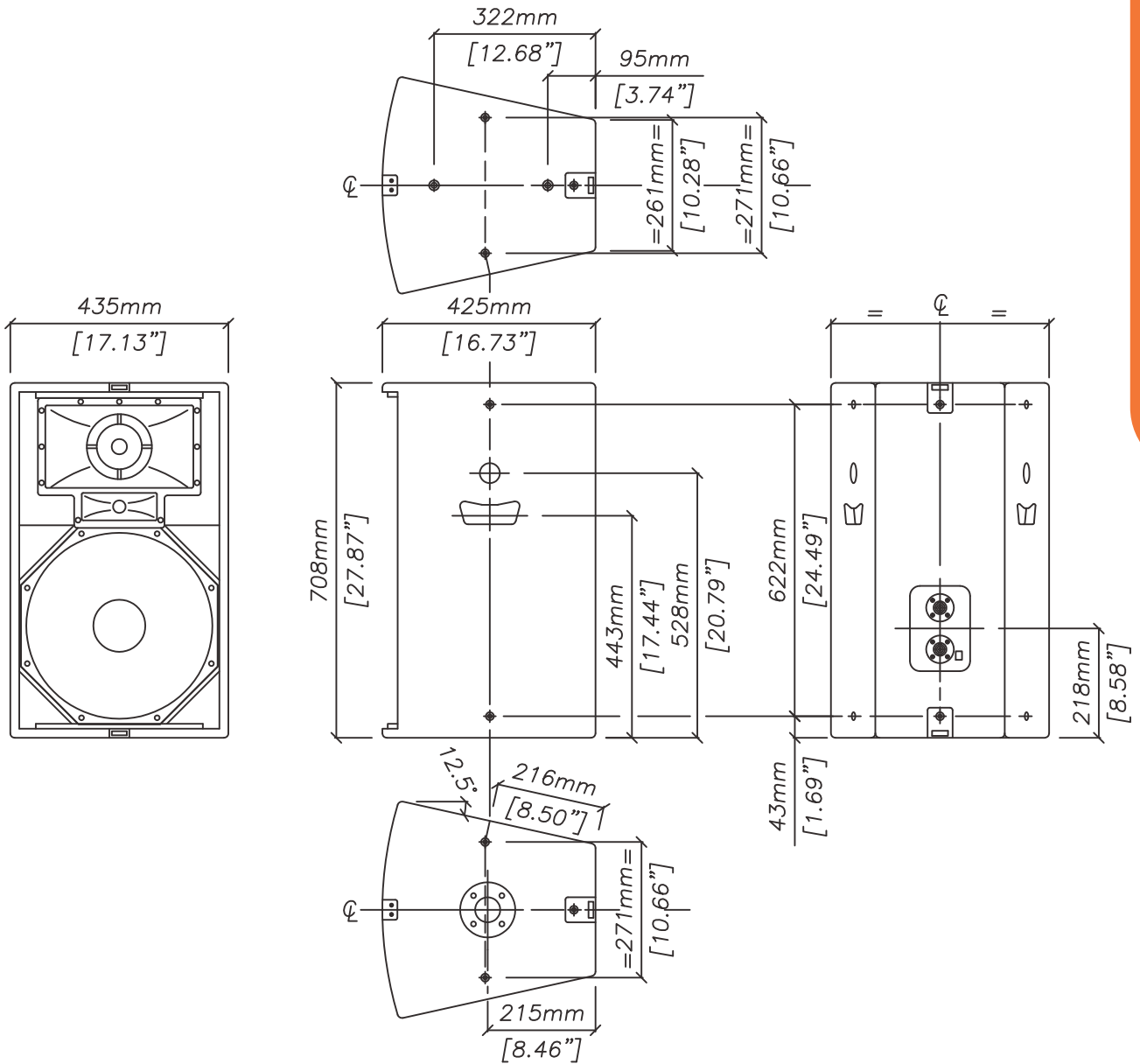


# WT3

Arrayable three-way compact theatre enclosure

overall dimensions

touring and theatre



WT3

Century Point, Halifax Road, Cressex Business Park,  
High Wycombe, Buckinghamshire HP12 3SL, England.  
Telephone: +44 (0)1494 535312 Facsimile: +44 (0)1494 438669  
E-mail: [info@martin-audio.com](mailto:info@martin-audio.com)  
All information is Copyright © 2011 Martin Audio Ltd.



# WT3

Arrayable three-way compact theatre enclosure

## technical specifications

TYPE	Compact three-way trapezoid, switchable bi-amp/triamp
FREQUENCY RESPONSE (5)	55Hz-18kHz $\pm$ 3dB, -10dB @ 45Hz
DRIVERS	15" (380mm) / 3" (75mm) voice coil 6.5" (165mm) horn loaded mid-range 1" (25mm) exit HF compression driver
RATED POWER (2)	LF: 500W AES, 2000W peak MF/(MF + HF): 150W AES, 600W peak HF: 60W AES, 240 peak
RECOMMENDED AMPLIFIER	MA3.0
SENSITIVITY (6)	LF: 100dB MF/(MF + HF): 107dB HF: 105
MAXIMUM SPL (calculated @ 1m)	127dB continuous, 133dB peak
NOMINAL IMPEDANCE	LF: 8 ohms MF/(MF + HF): 16 ohms HF: 16 ohms
DISPERSION (-6dB)	65° horizontal, 40° vertical
CROSSOVER	Bi-amp: 650Hz active, 3.3kHz passive Tri-amp: 650Hz active, 4kHz active
FINISH	Textured black paint
PROTECTIVE GRILLE	Black perforated steel
CONNECTORS	2 x Neutrik NL8
FITTINGS	10 x M8 threaded inserts 1 x mounting pole socket 2 x MAN blanking plates 2 x rear kelp fittings 2 x front lid fittings
DIMENSIONS	(W) 435mm x (H) 708mm x (D) 425mm (W) 17.1ins x (H) 27.9ins x (D) 16.7ins
WEIGHT	32kg (70.5lbs)

## accessories

WT3LID	Lid
HTKW3Y	Flying yoke
HTKCT05	8mm Shouldered eye bolt
GPT060	Fitted enclosure flying points
HTKLI5	Lightweight install stud

### Notes

- (1) Measured on-axis in half space at 2 metres, then referred to 1 metre.
- (2) AES Standard ANSI S4.26-1984.
- (3) Measured in half space at 2 metres with 1 watt input, using band limited pink noise, then referred to 1 metre.
- (4) Measured in half space at 2 metres using band limited pink noise, then referred to 1 metre.
- (5) Measured on-axis in open (4 $\pi$ ) space at 2 metres, then referred to 1 metre.
- (6) Measured in open (4 $\pi$ ) space at 2 metres with 1 watt input, using band limited pink noise, then referred to 1 metre.
- (7) Measured in open (4 $\pi$ ) space at 2 metres using band limited pink noise, then referred to 1 metre.
- (8) Measured in open (4 $\pi$ ) space at 2 metres with 2.83V input, using band limited pink noise, then referred to 1 metre.
- (9) Calculated at 1 metre.

### Trade Descriptions Act

Due to Martin Audio's policy of continuing improvement, we reserve the right to alter these specifications without prior notice. Martin Audio is committed to refining state of the art sound reinforcement, combining in-depth product and field applications research with advanced manufacturing techniques. Every Martin Audio product is built to the highest manufacturing standards and rigorously tested to ensure that it meets the performance criteria specified in the design.

## architectural and engineering specifications

The loudspeaker system shall be of the three-way switchable bi-amp/tri-amp type consisting of one 15" (380mm) direct radiating reflex loaded low frequency transducer, one 6.5" (165mm) cone driver mounted on a constant directivity horn flare with integral toroidal waveguide and one 1" (25mm) exit HF compression driver mounted on a constant directivity horn in a trapezoidal plywood enclosure. The enclosure shall be fitted with an integral pole mounting socket and threaded inserts to facilitate a variety of mounting options. Tri-amp or bi-amp operation shall be selected by a switch at the rear of the enclosure. In tri-amp mode the loudspeaker shall be operated with a separate electronic controller providing a 650Hz crossover between low and mid frequency sections and a 4kHz crossover between mid and high frequencies. In bi-amp mode the mid and high frequency sections shall be integrated by an internal 3.3kHz passive crossover network.

Performance of the loudspeaker system with its electronic controller shall meet or exceed the following criteria:

Frequency response measured 1 metre on axis shall be 55Hz-18kHz  $\pm$  3dB.

High frequency dispersion at -6dB points shall be 65° H x 40° V.

Power handling shall be 500W AES, 2000W peak LF, 150W AES, 600W peak MF/(MF+HF), 60W AES, 240 peak HF.

Rated impedance shall be 8 ohms LF, 16 ohms MF/(MF+HF), 16 ohms HF.

Maximum SPL measured at 1 metre on axis shall be 127dB continuous, 133dB peak.

Dimensions (W) 435mm x (H) 708mm x (D) 425mm (17.1ins x 27.9ins x 16.7ins).

Weight 32kg (70.5lbs).

The loudspeaker system shall be the Martin Audio WT3.

Century Point, Halifax Road, Cressex Business Park,  
High Wycombe, Buckinghamshire HP12 3SL, England.  
Telephone: +44 (0)1494 535312 Facsimile: +44 (0)1494 438669  
E-mail: info@martin-audio.com  
All information is Copyright © 2011 Martin Audio Ltd.

