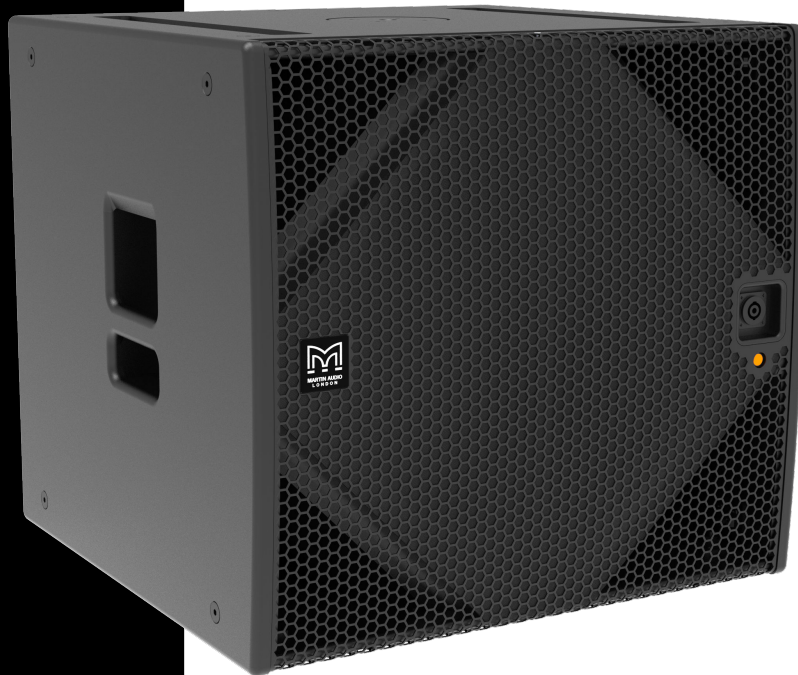


# SX118+ User Guide



## Table of Contents

Introduction .....	3
Differences between the SX118+ and SX118 .....	3
Optional accessories .....	4
Set of four castors WHEELKIT .....	4
Transit cover SX118+TC .....	4
M10 eye bolt HTKCT06 .....	4
Wind-up telescopic pole ASF20071 .....	4
Connecting the SX118+ .....	5
Weatherising the SX118+ .....	6
Installing outdoors .....	6
Fitting castors .....	7
To fit castors .....	7
Flying a single SX118+ .....	8
To fly a single SX118+ .....	8
Installing a pole .....	9
To install a pole .....	9
SX118+ amplifier compatibility .....	10
Amplifier compatibility legend .....	10
System controllers .....	11
Using other controllers .....	11
System design .....	12
To download Display 3 .....	12
EASE files .....	12
3D SketchUp file .....	12
Revit family .....	12
DWG file .....	12
Other SX subwoofers .....	13
SX118+ specification .....	15
SX118+ technical drawing .....	16
Troubleshooting .....	17
Technical support .....	17
Service .....	17
Warranty .....	17
Unpacking .....	17
Recycling .....	17

# Introduction



The SX118+ is a compact, high-performance subwoofer that extends the system's low-frequency operating range to 38 Hz and delivers impressive output for such a compact enclosure.

It features a long-excursion 18 in (460 mm) driver with a 4 in (100 mm) voice coil, a water-resistant cone and a triple-roll surround in a compact reflex enclosure. The driver design maximises output while minimising power compression and distortion. The four reflex ports have a large frontal area to reduce turbulent air noise at very high levels, and the internal port geometry promotes laminar airflow.

The enclosure is built from multi-laminate birch ply, finished with a durable polyurethane coating and fitted with a stainless-steel grille, twin grab handles, skids, M10 mounting points with internal brackets for installation and a threaded pole socket for pole-mounting point-source loudspeakers. Cabinet wheels and a transit cover are available as optional accessories.

The SX118+ includes three NL4 connectors: an input and a link on the rear panel and an additional input on the front for use in cardioid orientation. All three sockets are weather-resistant when you use the correct NL4 cable connectors (NLT4FX or NLT4FX-BAG) or install sealing plugs in any unused sockets, so you must seal all three for outdoor use.

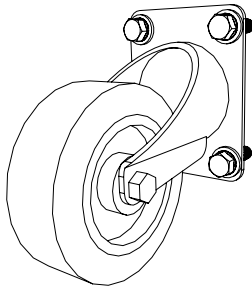
It also has two LED indicators, one on the front and one on the back, which you can illuminate via Vu-Net software to identify each enclosure on the circuit. The rear LED is intended for use in cardioid setups.

## Differences between the SX118+ and SX118

Compared with the SX118, the SX118+ (Q2 2026) is an all-new design with enhanced performance and features. It introduces new drivers and an improved cabinet for greater durability and consistency. It also adds a front-mounted NL4 input connector for simpler cabling in cardioid configurations. The rear panel still has an input and a link connector, but all three NL4 sockets are now weather-resistant when you use the correct cable connectors or install sealing plugs in any unused sockets, so you no longer need the WRKIT connector cover. The SX118+ also includes front and rear LEDs that you can illuminate via Vu-Net software to identify each enclosure on the circuit. Because the cabinet is slightly larger than the SX118, it uses a new transit cover.

## Optional accessories

### Set of four castors WHEELKIT

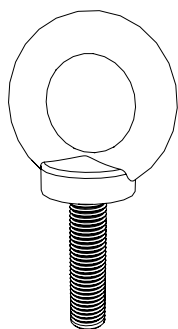


- Four heavy-duty 10 cm (4 in) swivel castors
- Fittings: 16 x M8 hex head bolts, 16 x flat washers and 16 x spring washers
- Compatible with SX115, SXC115, SXCF115, SX215, SX118, SXC118, SXCF118, SX218, SXP118, SXP218, Q118, Q218, X115, X118, X218, XP118, SXH218 and SXHF218

### Transit cover SX118+TC

- Tour grade transit cover
- Cut outs for easy access to handles
- Protects the SX118+ in transit

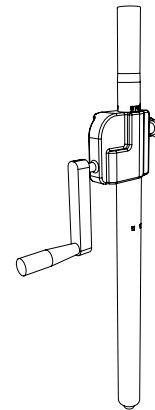
### M10 eye bolt HTKCT06



- M10 eye bolt for flying individual speakers
- Bolt size: 10 mm x 1.5 mm thread size
- Shank length: 35 mm (1 3/8 in)
- Working load limit: 740 kg (1,628 lbs)

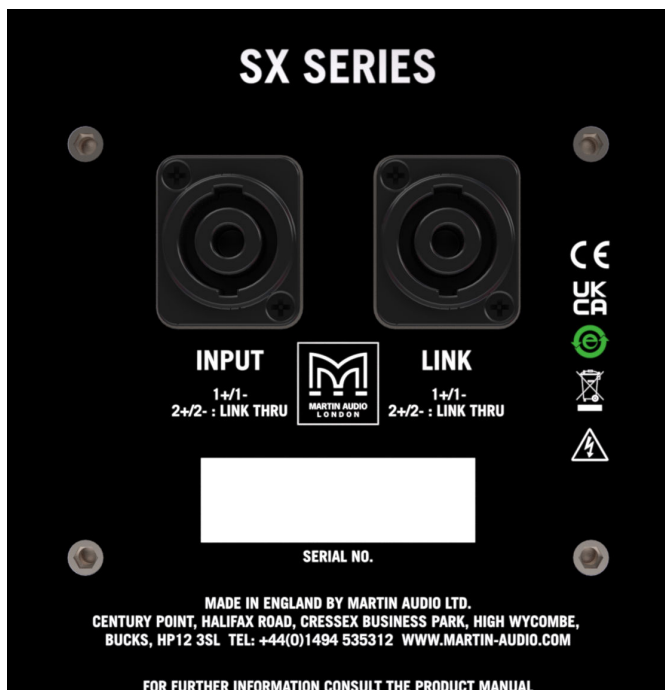
- Material: Forged steel
- Weight: 120 g (0.27 lbs)

### Wind-up telescopic pole ASF20071



- Wind-up telescopic pole for mounting speakers on subwoofers
- Rugged steel pole with wind-up handle to allow you to raise and lower the speaker
- Locking screw and safety button
- Diameter: 35 mm (1 3/8 in) to fit standard top-hat fittings of portable speakers
- M20 threaded fitting to attach to the subwoofer
- Maximum load: 35 kg (77.2 lb)
- Pole length: 709 mm (27.9 in) to 1121 mm (44 in) including the section inside the top-hat fitting but excluding the threaded section that screws into the subwoofer

## Connecting the SX118+



The SX118+ has two NL4 sockets on the back panel, labelled INPUT and LINK, and a third NL4 socket on the front. The front socket is another INPUT socket for use with subwoofers in cardioid orientation. Despite the labels, all three sockets are wired the same, so you can use them in any order. However, we recommend using them as labelled to simplify cabling checks.

For all three sockets, the pins connect as follows:

- Pins 1+/1– connect to the driver and link through to pins 1+/1– of the other two sockets.
- Pins 2+/2– link through to pins 2+/2– of the other two sockets.

Use NLT4FX or NLT4FX-BAG connectors to give a weather-resistant seal with an IP rating of IP54. Also see, [Weatherising \(page 6\)](#).

## Weatherising the SX118+

To weatherise the SX118+ for outdoor use, you just need to seal the three NL4 sockets. The rest of the subwoofer is already prepared.

To seal the sockets, use NLT4FX or NLT4FX-BAG connectors for the cable connections and install a Martin Audio NL4 sealing plug in any unused socket. These connectors and plugs provide a weather-resistant seal with an IP rating of IP54.

- If you have both an input cable and link cable connected, install a sealing plug in the unused input socket.
- If you have only an input cable connected, install two sealing plugs: one in the link socket and one in the unused input socket.

## Installing outdoors

When installing a weatherised SX118+ outdoors:

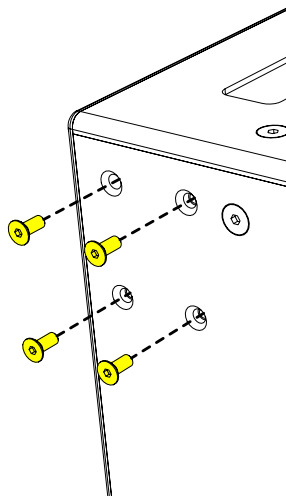
- Install with a slight downward tilt whenever possible to improve water drainage from the cabinet. Avoid any upward tilt.
- Provide overhead protection where you can, such as a porch, tent or external roof. This helps prevent direct exposure to rain.

# Fitting castors

To fit castors to the SX118+ you need an optional [WHEELKIT \(page 4\)](#) accessory. This is a set of four swivel castors along with all required bolts and washers.

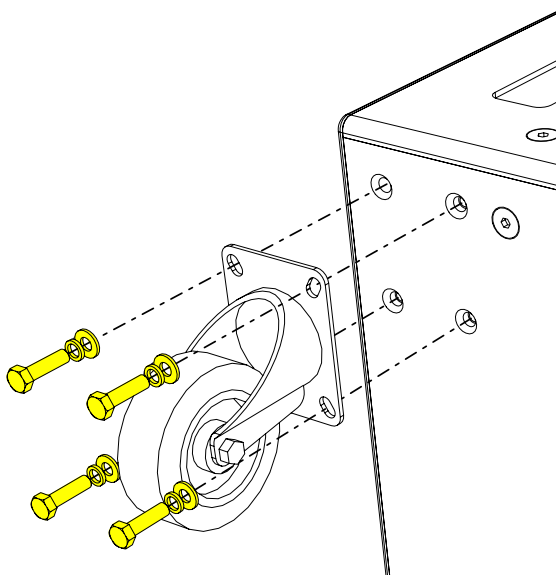
## To fit castors

1. Remove the M8 counter-sunk screws from the back of the SX118+.



2. Bolt each castor in place using the fittings from the kit.

**Order of fittings:** cabinet, castor, flat washer, spring washer, bolt.



Make sure you use the bolts from the kit. The screws from the cabinet aren't suitable.

## Flying a single SX118+

You can fly individual SX118+ subwoofers from ceilings, trusses or poles by using Martin Audio M10 shouldered eye bolts (HTKCT06) and appropriately rated steel ropes or chains.



Eye bolts allow you to fly single subwoofers only.

Note that Martin Audio shouldered eye bolts are manufactured from cast steel and are specifically engineered and rated for flown applications.



Don't use eye bolts from other manufacturers, as this could be dangerous.

Forged-steel eye bolts available from DIY suppliers are **not** strong enough. Even cast or machined eye bolts rated for purpose can be unsuitable, as they can have wide shoulders that cause the bolt to tighten against the cabinet rather than the thread.

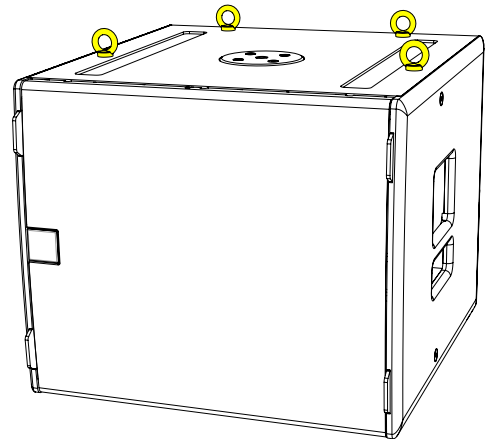
The SX118+ has 20 x M10 mounting points: two on the top, five on the bottom, four on the left, four on the right and five on the back. All of these mounting points are supported by internal brackets rather than being simple inserts.



Flying heavy equipment in public spaces is extremely dangerous. Make sure the installer uses appropriately rated equipment and has suitable qualifications and experience.

Install the safety bond fixing in a different place from the main fixings. This is so that it can support the cabinet if the main fixings fail.

3. Connect the eye bolts and fixings using suitably rated steel rope or shackles and chains.



## To fly a single SX118+

1. Remove some of the M10 counter-sunk screws from the SX118+ (usually from the top) and screw in M10 eye bolts. We recommend five eye bolts: four to fly the subwoofer and one as a redundant safety bond.
2. Install suitably rated fixings, such as sleeve anchors for ceilings, or girder clamps for trusses and scaffolding.



## Installing a pole

The SX118+ has a top-mounted M20 thread plate for installing a screw-mounted pole. This lets you pole-mount speakers with standard top hat fittings such as CDD-LIVE, WPM and MLA Mini. If you fit a Martin Audio pole-mount adaptor (part ASF20045) to the top of the pole, you can also mount speakers on yokes. This lets you pole-mount speakers that don't have top hat fittings, such as CDD and FlexPoint.

The Martin Audio [wind-up telescopic pole ASF20071 \(page 4\)](#) is ideal for use with the SX118+ and lets you adjust the speaker height. It also makes mounting easier as you can install the speaker at a low level and then wind it up into position. This pole supports loads up to 35 kg (77.2 lbs). If you set the pole at the level marked "Preset" the maximum load increases to 56 kg (123.5 lbs), which lets you mount up to four WPM or four MLA Mini.

### To install a pole



Before you start, check that the speaker's weight is within the load limit of the pole.

1. Place the SX118+ on a flat, level and stable surface with the round plate on the top.
2. Screw the threaded pole into the M20 plate until it is fully tightened and secure.

## SX118+ amplifier compatibility

Amplifier	Channels	Channels used	One SX118+ per channel (8 ohm)	Two SX118+ per channel (4 ohm)	Three SX118+ per channel (2.67 ohm)	Four SX118+ per channel (2 ohm)
iK41	One channel	1 of 4	No	No	No	No
	Two channels bridged	2 of 4	Yes	No	No	No
iK42	One channel	1 of 4	No	No	No	No
	Two channels bridged	2 of 4	Yes	Yes	No	No
iK81	One channel	1 of 8	No	No	No	No
	Two channels bridged	2 of 8	−0.8 dB	No	No	No
VIA5004	One channel	1 of 4	No	No	No	No
	Two channels bridged	2 of 4	No	No	No	No
VIA2502	One channel	1 of 2	No	No	No	No
	Two channels bridged	2 of 2	No	No	No	No
VIA5002	One channel	1 of 2	No	No	No	No
	Bridging not available	NA	NA	NA	NA	NA
VIA2004	One channel	1 of 4	No	No	No	No
	Bridging not available	NA	NA	NA	NA	NA

### Amplifier compatibility legend

Yes	The amplifier channel can deliver the required power to achieve the full pink noise rated output of the loudspeaker, providing a reasonable amount of headroom for dynamic music content.
−1.0 dB	The amplifier channel provides sufficient power to meet the loudspeaker's RMS requirements (based on a 20 Hz – 20 kHz sine wave). However, it is unable to deliver the 6 dB peaks found in the AES pink noise test signal, which more accurately reflects the demands of dynamic music content. The table shows the shortfall in dynamic headroom, expressed in decibels.
No	The amplifier channel does not meet the loudspeaker's pink noise or RMS power requirements and is therefore not recommended. However, it may still be suitable if the application does not demand the full rated output of the loudspeaker.
NA	<b>Not available:</b> channel bridging isn't available with this amplifier.

Note that it is far more likely that an underpowered amplifier will damage a loudspeaker than one with excess power. Modern limiters in speaker presets can safely manage the amplifier's output. However, driving a system into distortion due to an insufficiently powered amplifier can cause heat buildup and lead to voice coil burnout, which is the most common form of loudspeaker damage.

If you need assistance with system design, please contact [Technical Support \(page 17\)](#).

# System controllers

For system controllers, we recommend the Martin Audio DX0.4, DX0.6 or DX4.0. Note that if you use an iKON amplifier, you don't need a system controller as these amplifiers have on-board system processing. For further details, see our website [martin-audio.com](http://martin-audio.com).

## Using other controllers

If you use a controller from another manufacturer, you need to configure settings such as crossovers, limiters and equalisation points. You can find these settings in our **Loudspeaker parameter spreadsheet**, which we provide as a free download. For details of how to use the spreadsheet, read the instructions in the spreadsheet or watch the video guide.

### To download the loudspeaker parameter spreadsheet

1. Go to our website [martin-audio.com](http://martin-audio.com).
2. Select **Support > Loudspeaker Settings**.
3. Scroll to **CURRENT-PRODUCT-PARAMETERS** and click **DOWNLOAD**.

### To watch the video guide

1. Go to our website [martin-audio.com](http://martin-audio.com).
2. Select **Support > Loudspeaker Settings**.
3. Scroll to **PARAMETER VIDEO** and click **VIDEO**.

# System design

To design your system and decide on the best positions for speakers and subs, we recommend Martin Audio **Display 3** software, which we provide as a free download from our website.

Display 3 allows you to model your space and experiment with various system configurations and speaker positions. Display 3 predicts the performance of your experimental configurations, allowing you to optimise the performance of your system at the design stage.

## To download Display 3

1. Visit our website [martin-audio.com](http://martin-audio.com).
2. Select **Support > Software/Firmware**.
3. Scroll to **Display 3** and click **Download**.

## EASE files

You can model the SX118+ in **EASE** by downloading a ZIP file of high-resolution GLL files, available as a free download from our website. Alternatively, you can download a set of GLL files that are compatible with **EASE Focus**.

Note that we recommend using **Display 3** rather than **EASE** or **EASE Focus**.

## To download GLL files

1. Visit our website [martin-audio.com](http://martin-audio.com).
2. Select **Support > GLL and CLF Data**.
3. Scroll to **SX Series** or **EASE Focus** and click **Download**.

## 3D SketchUp file

For modelling the SX118+ in **SketchUp**, we provide a 3D SketchUp file as a free download.

## To download the 3D Sketchup file

1. Visit our website [martin-audio.com](http://martin-audio.com).
2. Select **Products > Product List** and click on **SX118+**.
3. Select the **Technical drawings & 3D models** section and click **SKP-BLACK**.
4. For accessories, select the **Accessories** section and click **SKP-B**.

## Revit family

For modelling the SX118+ in Revit, we provide a Revit family as a free download.

## To download the Revit family

1. Visit our website [martin-audio.com](http://martin-audio.com).
2. Select **Products > Product List** and click on **SX118+**.
3. Select the **Technical drawings & 3D models** section and click **REVIT FILE**.

## DWG file

For viewing the SX118+ technical drawing in CAD software (such as AutoCAD), we provide a DWG file as a free download.

## To download the DWG file

1. Visit our website [martin-audio.com](http://martin-audio.com).
2. Select **Products > Product List** and click on **SX118+**.
3. Select the **Technical drawings & 3D models** section and click **DWG**.
4. For DWG files for accessories, select the **Accessories** section and click **DWG**.

## Other SX subwoofers

The SX Series subwoofers are a range of sub bass enclosures designed to complement Martin Audio full range systems. The range encompasses installation and touring subs, from ultra-compact miniature subs perfect as discreet, unobtrusive installation partners to the ADORN or CDD ranges, right up to very high output twin 18" models perfect for touring use in conjunction with Wavefront Precision line arrays. The larger models are built to be weather resistant and, when the NL4 connectors are protected, are suitable for occasional outdoor use as a portable system or for outdoor installation as long as they are not directly exposed to the elements. Depending on the model, the NL4 connectors are protected in one of two ways, as shown in the table below. Some models use an optional connector cover that

shields the two rear NL4 sockets. The newest models do not use a connector cover and instead have three special NL4 sockets that provide an IP rating of IP54 when you use the correct weather-resistant connectors and fit NL4 sealing plugs in any unused sockets.

The range includes two powered, Dante equipped subwoofers. These are an ideal partner for CDD-LIVE. The range also includes three marine passive subwoofers for use in saltwater environments such as cruise ships and beach-side locations.

The optional accessories include eye bolts for flying smaller models, frames for flying larger models, and castors and rugged transit covers for use in touring.

For further details, visit our website [martin-audio.com](http://martin-audio.com).

## Passive SX subwoofers

		Castors	Transit cover	Weatherised connector cover	Weatherised NL4 connectors and LEDs	Marine version available
SX110	10" passive subwoofer	No	No	No		
SX210	Dual 10" passive subwoofer	No	No	No		
SX112	12" passive subwoofer	No	No	No		Yes
SX212	Dual 12" passive subwoofer	No	No	No		
SX115	15" passive subwoofer	Optional	Optional	Optional		
SXC115	15" passive cardioid subwoofer	Optional	Optional	No		
SXCF115	15" passive cardioid flown subwoofer	Optional	Optional	No		
SX215	Dual 15" passive subwoofer	Optional	Optional	Optional		
SX118	18" passive subwoofer	Optional	Optional	Optional		Yes
SX118+	18" passive subwoofer	Optional	Optional	No	Yes	
SXC118	18" passive cardioid subwoofer	Optional	Optional	Optional		
SXCF118	18" passive cardioid flown subwoofer	Optional	Optional	Optional		
SX218	Dual 18" passive subwoofer	Optional	Optional	Optional		Yes
SX218+	Dual 18" passive subwoofer	Optional	Optional	No	Yes	
SXH218 (up to 2025)	Hybrid® horn/reflex, dual 18" passive subwoofer	Supplied	Optional	Optional		
SXH218 (from 2026)	Hybrid® horn/reflex, dual 18" passive subwoofer	Supplied	Optional	No	Yes	
SXHF218 (up to 2025)	Hybrid® horn/reflex, dual 18" passive flown subwoofer	Supplied	Optional	Optional		
SXHF218 (from 2026)	Hybrid® horn/reflex, dual 18" passive flown subwoofer	Supplied	Optional	No	Yes	

## Powered SX subwoofers

		Castors	Transit cover	Rain cowl
SXP118	18" powered portable subwoofer	Optional	Optional	Optional
SXP218	Dual 18" powered portable subwoofer	Optional	Optional	Optional

# SX118+ specification

Type	Compact, direct-radiating reflex-loaded subwoofer
Frequency response <sup>1</sup>	38 Hz – 100 Hz $\pm$ 3 dB, –10 dB @ 31 Hz
Driver	18 in (460 mm) long-excursion driver with 4 in (100 mm) aluminium voice coil, neodymium motor with T-pole and demodulation ring, waterproof cone
Rated power <sup>2</sup>	1,500 W AES, 6,000 W peak
Recommended amplifier	<a href="#">iK41</a> , <a href="#">iK42</a> , <a href="#">iK81</a> , <a href="#">bridged for full output (page 10)</a>
Sensitivity <sup>3</sup>	99.5 dB
Maximum SPL <sup>2,3</sup>	131 dB continuous, 137 dB peak, 143 dB peak with crest factor 4
Nominal impedance	8 ohm
Dispersion	Omni-directional or cardioid when paired
Enclosure	Multi-laminate birch plywood
Finish	Black (RAL 9005) or white (RAL 9016) textured paint
Grille	Black or white perforated stainless steel
LED indicators	Two LEDs: one front, one rear (rear LED for cardioid subs)
Connectors	3 x NLT4MPXX-BAG (one front, two rear) IP54 weather-resistant seal with NLT4FX, NLT4FX-BAG or weatherproof NL4 sealing plug
Pin connections (front and rear input)	1+/1–
Pin connections (link)	1+/1– linked to 1+/1– 2+/2– linked to 2+/2–
Environmental testing <sup>4</sup>	IP rating IP21 MIL-STD-810H ISO 4892-2 Solar Radiation ISO 12944-6 Category C3 Corrosion resistance
Fittings	2 x large skids on base with mating channels on top M20 top-mounted thread plate for optional pole Two bar handles, one on each side 20 x M10 mounting points for optional eye bolts: 5 on top, 5 on bottom, 4 on left, 4 on right, 2 on rear 16 x M8 inserts on rear for optional castors
Dimensions	(W) 650 mm x (H) 603 mm x (D) 635 mm (763 mm with castors) (W) 25.6 in x (H) 23.7 in x (D) 25.0 in (30.0 in with castors)
Weight	49.2 kg (109 lbs), 52.5 kg (116 lbs) with castors
Optional accessories	<a href="#">Set of four castors WHEELKIT (page 4)</a> <a href="#">Transit cover SX118+TC (page 4)</a> <a href="#">M10 eye bolt HTKCT06 (page 4)</a> <a href="#">Wind-up telescopic pole ASF20071 (page 4)</a> Weatherproof NL4 sealing plug

<sup>3</sup>In half space (2 pi) at 1 m with 1 watt input and band-limited pink noise.

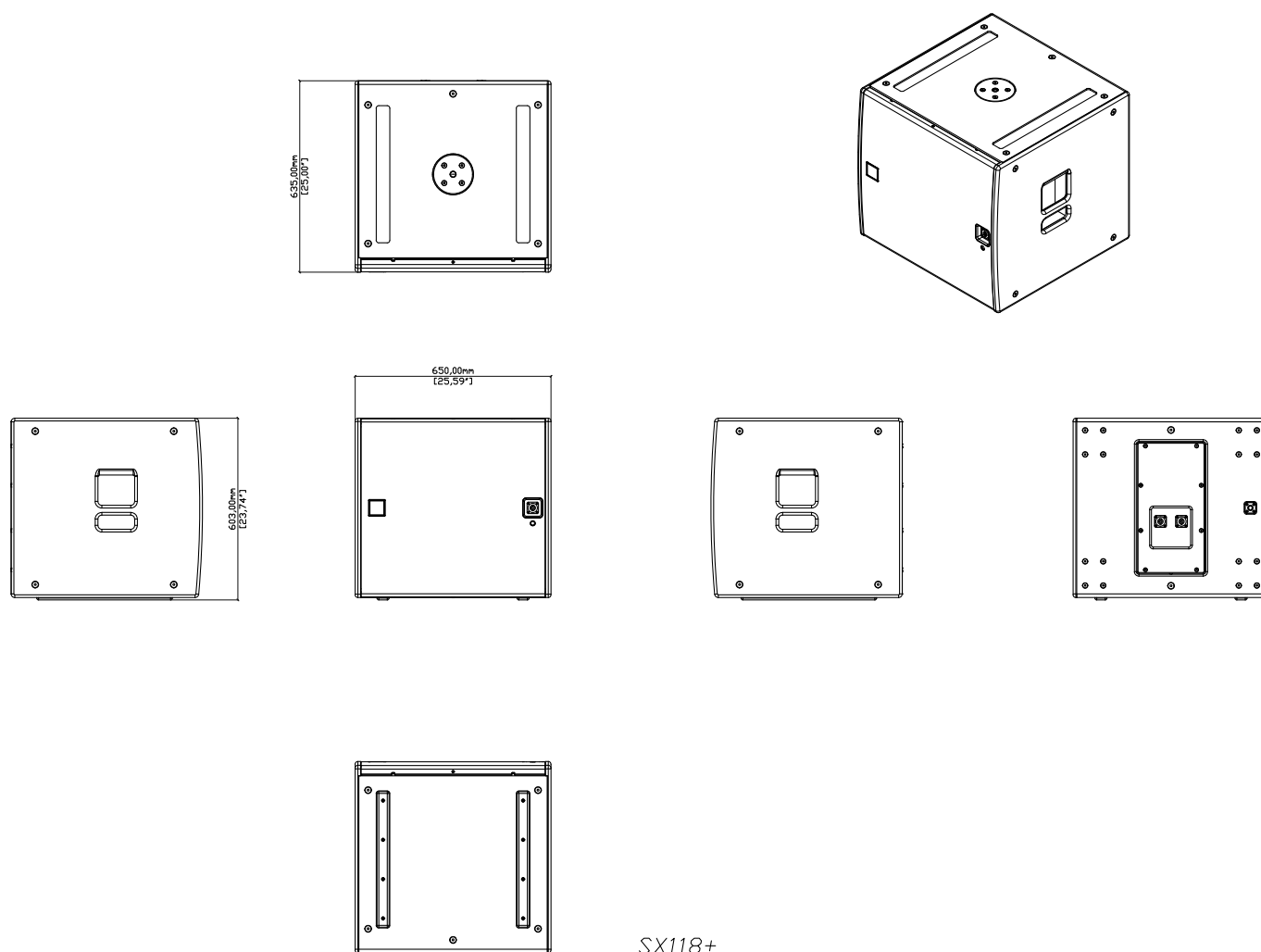
<sup>4</sup>For details, see [martin-audio.com/environmentaltesting](http://martin-audio.com/environmentaltesting)

<sup>1</sup>On-axis in open space (4 pi) at 1 m.

<sup>2</sup>Tested for 2 hours with band-limited pink noise as specified in AES2-1984 (r2003). Peak power defined as 6 dB above AES power.

# SX118+ technical drawing

- To load this drawing into CAD software, see [DWG files \(page 12\)](#).





# Troubleshooting

Sound not right. Make sure the input and output connectors are fully plugged into the sockets. Check the sound quality with headphones at the amplifier or preamp.

## Technical support

For technical support, contact your supplier or Martin Audio. For Martin Audio technical support, visit [martin-audio.com](https://martin-audio.com) and select **Support > Support Contacts**.

## Service

For service information, go to our website [martin-audio.com](https://martin-audio.com) and select **Support > Service & Returns**.

## Warranty

For warranty information, go to our website [martin-audio.com](https://martin-audio.com) and select **Support > Service & Returns**.

## Unpacking

After unpacking, carefully check your speakers for any signs of transit damage. If you find any issues, inform your dealer straight away. If possible, keep the packaging for future use.

## Recycling

When the product reaches the end of its life, please dispose of it responsibly at a recycling centre.

**Martin Audio Limited**

Century Point

Halifax Road

Cressex Business Park

High Wycombe

Buckinghamshire

HP12 3SL

England

**FOR SALES ENQUIRIES**

**UK**

+44 1494 535 312

info@martin-audio.com

**NORTH AMERICA**

+1 323 381 5310

**[www.martin-audio.com](http://www.martin-audio.com)**

Martin Audio, the Martin Audio logo and Hybrid are registered trademarks of Martin Audio Ltd. in the United Kingdom, United States and other countries; all other Martin Audio trademarks are the property of Martin Audio Ltd.

